

Figure 1. Stations available in ROMAN in the western United States. RAWs stations- triangles; other stations- plus symbols.

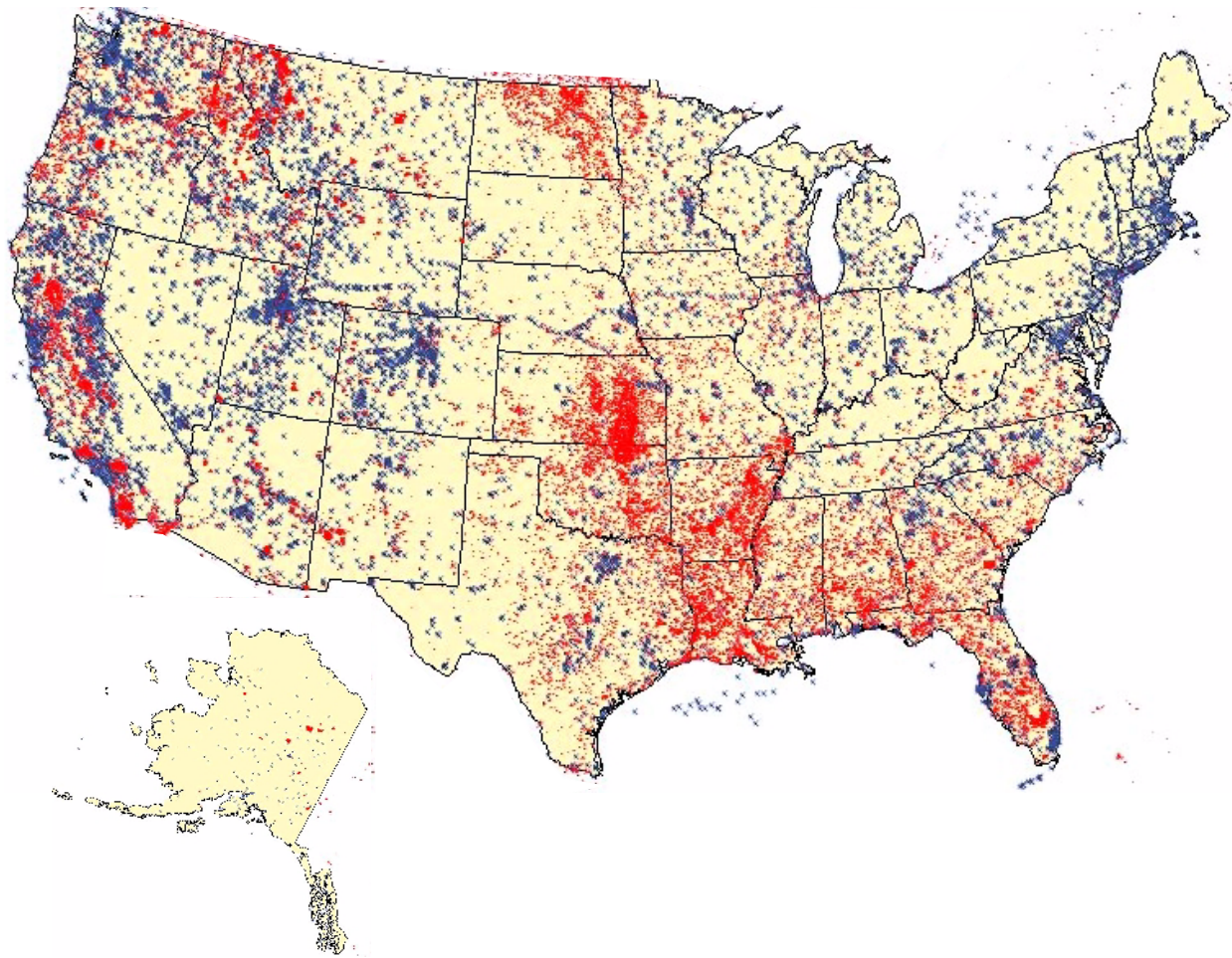
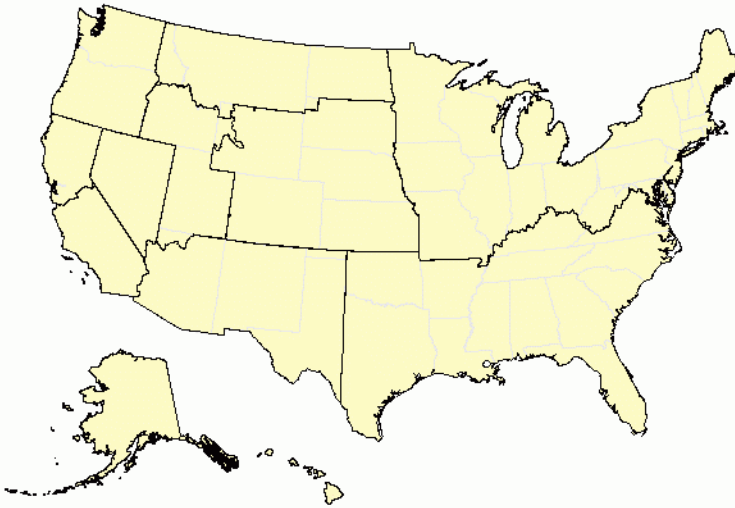


Figure 2. Locations of weather observations (grey cross symbols) superimposed upon locations of fires (red in color image/light grey in monochrome image) detected by MODIS satellites during 2003.

QUICK LINKS help
 Location, ST
 Lake Arrowhead, CA

ROMAN
Real-time Observation Monitor and Analysis Network

Geographic Area Coordination Centers
Click in a Geographic Area Coordination Center or use the menus below to access weather information



[GACCs](#) [CWAs](#) [States](#) [FWZs](#) [MODIS](#) [Text Page](#)

Observations and Summaries

Region **Product**

[ROMAN Home](#) [Weather Near Fires](#) [Help](#) [Status](#)

ADAS Western U.S. Maps [ADAS Help](#)

10 km Resolution

2.5 km Resolution

Figure 3. ROMAN web portal (www.met.utah.edu/roman).

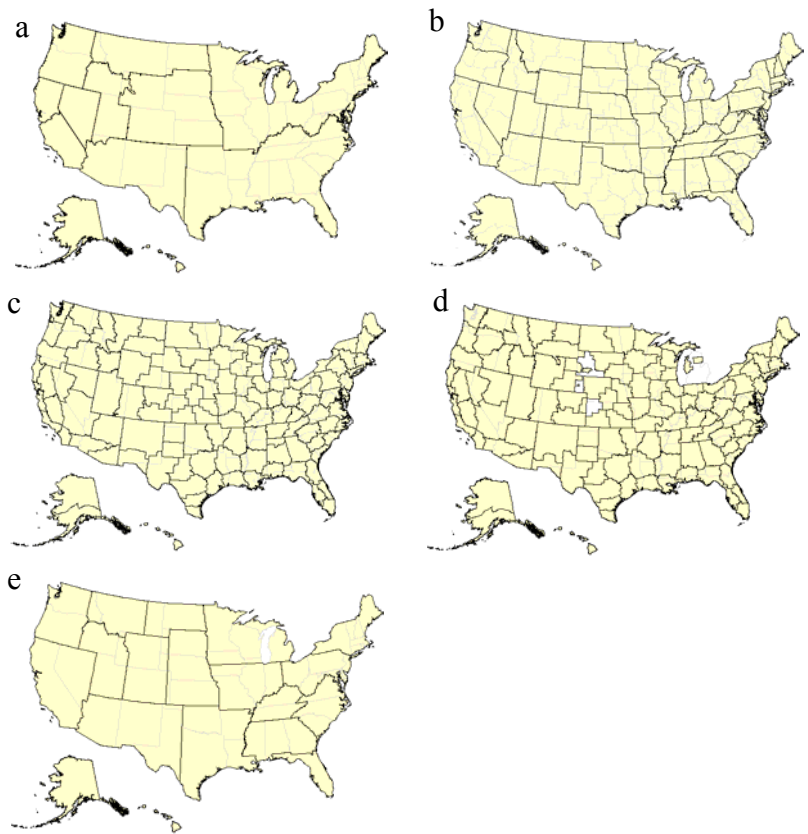


Figure 4. Fire weather information around the United States is organized spatially in ROMAN in several different ways: a) Geographic Area Coordination Centers; b) states; c) National Weather Service County Warning Areas; d) National Weather Service Fire Weather Zones; e) MODIS active fire map geographic domains.

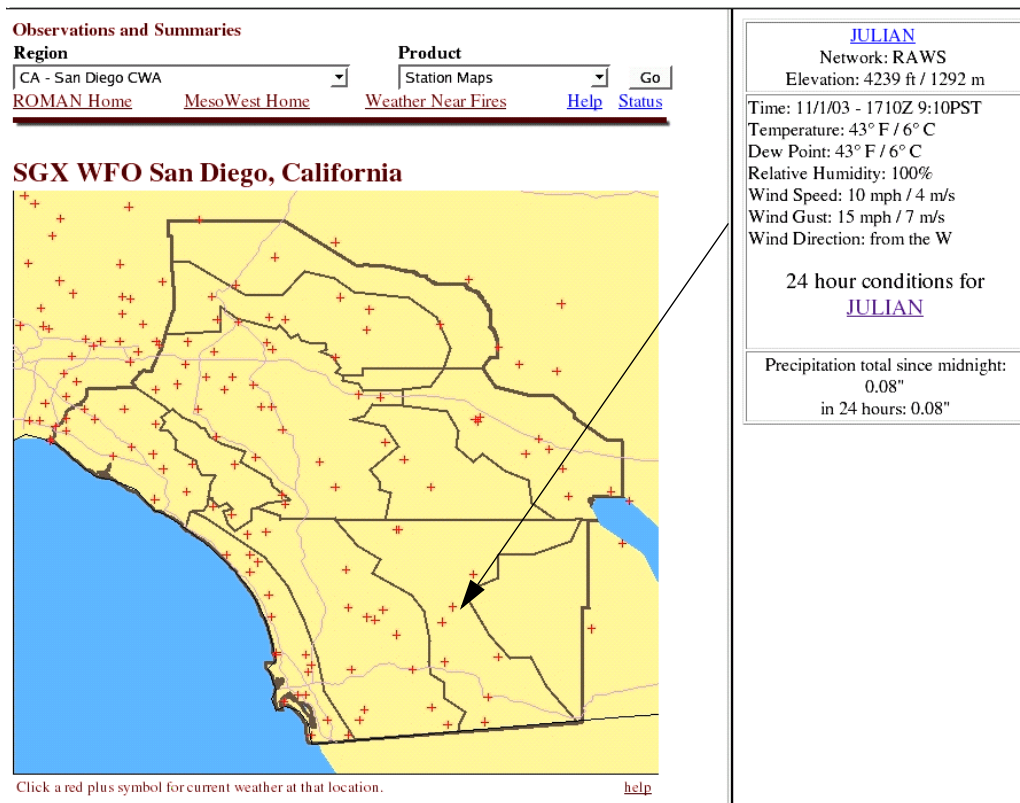


Figure 5. CWA interface for the San Diego WFO. The plus symbols are links to weather information (in this instance Julian, CA was chosen). CWA tabular summaries are subdivided into the forecast zones delineated by gray lines.

SITE INFORMATION

ID: JULC1
 NAME: JULIAN
 LATITUDE: 33.0758
 LONGITUDE: -116.5908
 ELEVATION: 1292 m
 MNET: RAWS



(Click above or [here for topo map](#))

SITE LINKS

- [Help](#)
- [MesoWest](#)
- [English Units](#)
- [Local Time](#)
- [2 Week Summary](#)
- [Past Data](#)
- [Data Quality](#)
- [Station Information](#)
- [Station Status](#)
- [Restrictions](#)
- [Data in Spreadsheet Format](#)

DATA COURTESY OF
 Bureau of Land
 Management
 and
 California Dept of Water
 Resources

Past Weather Conditions for JULC1

Observations prior to selected time: October 31, 2003 - 23:59 GMT
 Weather Conditions at October 31, 2003 - 23:10 GMT

	23:10	24 Hour Max	24 Hour Min
Temperature	7.2° C	9.4 at 0:10	3.9 at 14:10
Dew Point	7.2° C	9.4 at 0:10	3.9 at 14:10
Relative Humidity	100%	100 at 0:10	100 at 0:10
Wind Speed	6 m/s from W	8 at 3:10	6 at 19:10
Wind Gust	13 m/s	18 at 1:10	13 at 19:10
Solar Radiation	70.0 W/m²m	322.0 at 20:10	0.0 at 2:10
Fuel Temperature	7.8° C	9.4 at 0:10	3.9 at 14:10

Precipitation accumulated since midnight: 0.00cm, in 24 hours: 0.00cm

Tabular Listing: October 30, 2003 - 23:59 through October 31, 2003 - 23:59 GMT

Time(GMT)	Temperature °C	Dew Point °C	Relative Humidity %	Wind Speed m/s	Wind Gust m/s	Wind Direction	Quality control	Solar Radiation W/m²m	Precipitation accumulated cm	Fuel Temperature °C
23:10	7.2	7.2	100	6	13	W	OK	70.0	10.08	7.8
22:10	7.2	7.2	100	7	15	W	OK	174.0	10.08	9.4
21:10	6.7	6.7	100	7	13	WSW	OK	162.0	10.08	7.8
20:10	6.7	6.7	100	7	15	W	OK	322.0	10.08	7.8
19:10	6.1	6.1	100	6	13	W	OK	237.0	10.08	7.2
18:10	5.0	5.0	100	7	13	W	OK	108.0	10.08	5.0
16:10	4.4	4.4	100	7	14	W	OK	136.0	10.08	5.0
15:10	3.9	3.9	100	7	13	W	OK	59.0	10.08	4.4

Select Previous Periods: [12 Hours](#) [24 Hours](#) [2 Days](#) [5 Days](#) [7 Days](#) [10 Days](#) [30 Days](#)

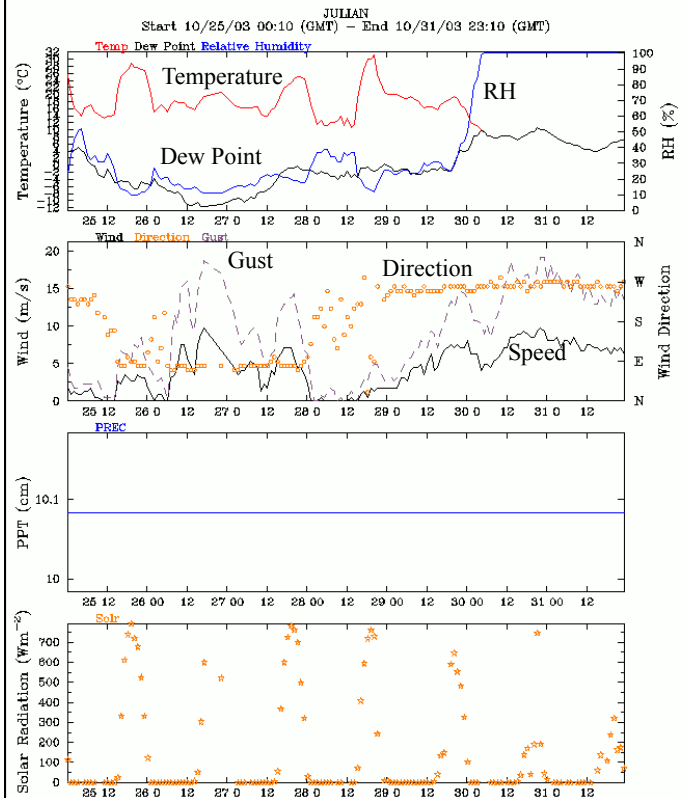


Figure 6. Tabular and time series station displays for Julian CA during the Cedar fire.

Table 1. Weather summary for fire weather zone SGX258 in the San Diego CA CWA. English units are used; see text for details.

Historic Weather Summary for CA - San Diego FWZ (click [here](#) to reset to current time)

Settings: Reports within last
 Time:

As of: 12:00 UTC 10/26/2003 [Sort by elevation](#) [Help](#) [QC Flag: Ok, Caution, Suspect](#)

SGX258																	
Station	Elev	Time		Current					24 Hour					Precipitation			
		LOCAL	UTC	TEMP	RH	WIND	DRCT	PKWND	MAX T	MIN T	MAX RH	MIN RH	MAX G	1 HR	3 HR	6 HR	24 HR
CAMERON FIRE STA	3442 ft	0400PST	1200	69	6	10	NE	28	86	44	33	4	29	0	0	0	0
CAMPO (AWRS)	2631 ft	0350PST	1150	66	10	16	NNE	-	84	46	42	6	40	-	-	-	-
CNF30 PORTABLE	3399 ft	0320PST	1120	60	11	2	NE	10	81	58	13	4	21	0	0	0	0
DESCANSO	3481 ft	0330PST	1130	67	7	14	NE	27	92	51	28	3	27	0	0	0	0
JULIAN	4239 ft	0310PST	1110	64	14	17	E	35	84	57	36	10	35	0	0	0	0
MT. LAGUNA	5761 ft	0400PST	1200	55	10	8	NNE	21	76	42	44	7	25	0	0	0	0
OAK GROVE	2753 ft	0400PST	1200	69	8	6	E	16	94	54	24	3	23	0	0	0	0
PINE HILLS	3599 ft	0310PST	1110	66	25	9	E	18	96	52	27	25	18	0	0	0	0
RANCHITA	4180 ft	0310PST	1110	58	17	5	ENE	8	81	58	18	11	22	0	0	0	0

Table 2. Observations in the vicinity of geographic place names can be determined. In this instance, Lake Arrowhead, CA was selected at 19:00 UTC 1 Nov. 2003. English units are used; see text for details

Lake Arrowhead CA: Latitude 34.24833 N Longitude -117.1883 W

(Placename location provided by: [TopoZone](#))

24-Hour Trend Monitor

Settings: -h Summary mi Radius [Change Settings](#)

24-Hour Changes 18:59 UTC 11/01/2003 Sort by: [name](#) or [elevation](#) [Help](#) [QC Flag: Ok, Caution, Suspect](#)

Station	Info	Dist/Dir	Time	Temp	DewT	RH	Dir	Spd	Gust
BPFC1 BIG PINE FLAT	RAWS 6860 ft	11 mi ENE	1815Z 10:15PST 1715Z 9:15PST	33/- 13 32/	31/+ 9 32/	93/+ 55 99/	SSW / E SSW/	5/+ 1 4/	12/+ 1 9/
DVOC1 DEVORE	RAWS 2080 ft	12 mi W	1810Z 10:10PST 1710Z 9:10PST	58/+ 5 56/+ 6	58/+ 12 56/+ 14	100/+ 22 100/+ 26	SSE / S SE / S	5/- 6 6/- 3	11/- 6 9/- 8
MMKC1 MILL CREEK (BD)	RAWS 2949 ft	14 mi SE	1820Z 10:20PST 1720Z 9:20PST	56/- 3 54/	50/+ 15 51/	79/+ 39 89/	W / S ESE/	4/+ 0 3/	8/- 2 7/
CVEC1 CONVERSE	RAWS 5617 ft	16 mi ESE	1820Z 10:20PST 1720Z 9:20PST	43/+ 0 38/	39/+ 12 38/	87/+ 34 100/	W / W W/	13/+ 0 11/	23/- 2 23/
FWSC1 FAWNSKIN	RAWS 6900 ft	17 mi E	1820Z 10:20PST 1720Z 9:20PST	33/- 3 33/	31/+ 10 31/	91/+ 38 93/	SSW / SSW S/	5/- 3 4/	13/- 3 12/
LTLC1 LYTLE CREEK	RAWS 2792 ft	17 mi W	1820Z 10:20PST 1720Z 9:20PST	52/+ 1 49/	52/+ 14 49/	99/+ 38 100/	S / NE ESE/	0/- 2 0/	5/- 8 4/
MNCC1 MORMON ROCK	RAWS 3301 ft	19 mi WNW	1820Z 10:20PST 1720Z 9:20PST	52/+ 6 53/	41/+ 6 43/	65/+ 1 69/	W / E E/	6/- 4 6/	13/- 10 10/
GNTC1 GRANITE MOUNTA	RAWS 4721 ft	22 mi NNE	1830Z 10:30PST 1730Z 9:30PST	41/- 4 40/	41/+ 17 40/	100/+ 57 100/	W / SW WSW/	2/- 22 0/	5/- 28 5/

Table 3. Fire Weather Monitor display for 1200 UTC 26 October, 2003. All stations in the San Diego CWA that have reported sustained winds in excess of 30 mph (13 m s⁻¹) and relative humidity below 25% during the past 6 h are shown.

Historic Fire Weather Monitor for CA - San Diego CWA (click [here](#) to reset to

Settings: -h Summary

Thresholds: Wind >= mph Gust >= mph Gust >= mph RH <= % RH >= % Precip/6 hrs >= inches AND OR

Time: :00 UTC / /

As of: 12:00 UTC 10/26/2003

[Help](#)

QC Flag: Ok, Caution, Suspect

Station	Info	Time	Gusts mph	Relh %	Weather
BNTC1 BEAUMONT	RAWS 2680 ft	0810Z 1:10PST	31	7	
CZZ CAMPO (AWRS)	NWS/FAA 2631 ft	1050Z 2:50PST	40	10	
ECSC1 EL CARISO	RAWS 3038 ft	1000Z 2:00PST	32	9	
FRCC1 FREMONT CANYON	RAWS 1781 ft	1130Z 3:30PST	31	6	
GOSC1 GOOSE VALLEY	RAWS 1529 ft	1055Z 2:55PST	30	7	
JULC1 JULIAN	RAWS 4239 ft	1110Z 3:10PST	35	14	
VLCC1 VALLEY CENTER	RAWS 1371 ft	1010Z 2:10PST	40	5	

Table 4. Maximum/minimum temperature summary for county warning area zone CA058 (San Diego Mountains) preceding the onset of the Cedar fire. Temperature in °F.

Maximum and Minimum Temperature for CA - San Diego CWA

Variable	Location	Network	Date
Temperature	CA - San Diego CWA	NWS and RAWS	25 October 2003

[Sort by elevation](#) [Help](#) [QC Flag:](#)
Ok, Caution, Suspect

CA058: San Diego County Mountains	Info	10-25		10-24		10-23		10-22		10-21	
		Max/Time	Min/Time	Max/Time	Min/Time	Max/Time	Min/Time	Max/Time	Min/Time	Max/Time	Min/Time
CMNC1 CAMERON FIRE STATIO	RAWS 3442 ft	86	44	90	47	95	46	96	50	96	48
CZZ CAMPO (AWRS)	NWS/FAA 2631 ft	86	42	91	48	91	46	95	48	95	48
TRI19 CNF30 PORTABLE	RAWS 3399 ft	81	59	84	59	82	62	86	63	88	63
DENC1 DESCANSO	RAWS 3481 ft	92	27	92	54	94	53	97	57	96	56
JULC1 JULIAN	RAWS 4239 ft	84	56	88	53	88	60	92	57	92	56
MLGC1 MT. LAGUNA	RAWS 5761 ft	76	41	81	43	83	43	84	46	85	46
OGVC1 OAK GROVE	RAWS 2753 ft	94	53	98	55	97	56	100	56	100	58
PIHC1 PINE HILLS	RAWS 3599 ft	96	51	97	52	98	53	102	55	103	56
RCHC1 RANCHITA	RAWS 4180 ft	81	59	85	61	89	63	90	66	89	68
Average		86	48	90	52	91	54	94	55	94	55

Table 5. Precipitation (in) monitor and precipitation summary for the San Diego CWA valid at 1900 UTC 1 Nov. 2003.

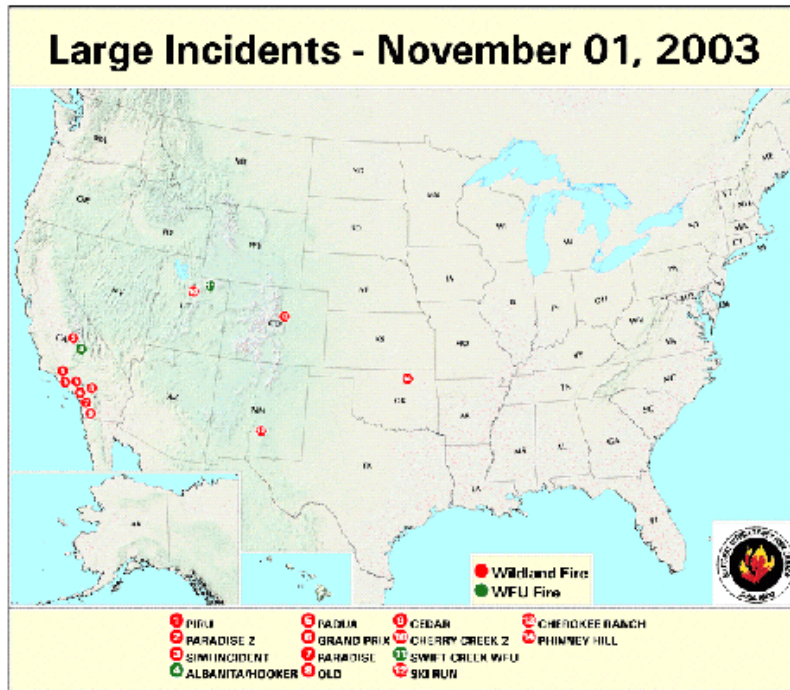
Precipitation Monitor for CA - San Diego CWA

Location	Network	Date	Hour(UTC)							
CA - San Diego CWA	RAWS	Current	November	2003	19:00	Change S				
Last updated 19:31 UTC 11/1/2003			Sort by elevation		Help					
CA042: Orange County Coastal Areas										
Station	Info	Time	1 HR	3 HR	6 HR	12 HR	24 HR	Since Midnight	Since 1300L	
CAPCI	RAWS 699 ft	1830Z 10:30PST	0	0	0.05	0.62	0.63	0.55	0.63	
BELL CANYON										
FRCCI	RAWS 1781 ft	1830Z 10:30PST	0.01	0.01	0.01	0.24	0.24	0.15	0.24	
FREMONT CANYON										
CA043: San Diego County Coastal Areas										
Station	Info	Time	1 HR	3 HR	6 HR	12 HR	24 HR	Since Midnight	Since 1300L	
LSFC1	RAWS 98 ft	1840Z 10:40PST	0	0	0.09	0.12	0.12	0.12	0.12	
LSF LAS FLORES										
CA048: San Bernardino and Riverside County Valleys -The Inland Empire										
Station	Info	Time	1 HR	3 HR	6 HR	12 HR	24 HR	Since Midnight	Since 1300L	
BNTC1	RAWS 2680 ft	1910Z 11:10PST	0	0.05	0.08	0.20	0.20	0.20	0.20	
BEAUMONT										
CLHC1	RAWS 1719 ft	1910Z 11:10PST	0	0	0.04	0.11	0.11	0.11	0.11	
CLARK										
CNAC1	RAWS 640 ft	1850Z 10:50PST	0	0	0.01	0.28	0.28	0.26	0.28	
CORONA										
CNSC1	RAWS 1949 ft	1820Z 10:20PST	0	0.09	0.13	0.15	0.15	0.15	0.15	
CRANSTON										
DVOCI	RAWS 2080 ft	1910Z 11:10PST	0	0	0.01	0.31	0.34	0.29	0.34	
DEVORE										
TSCCI	RAWS 1125 ft	1900Z 11:00PST	0	0	0.03	0.19	0.20	0.16	0.20	
TEMESCAL (CNF)										
MAXIMUM	-	-	0	0.09	0.13	0.31	0.34	0.29	0.34	
ZONE AVERAGE	-	-	0	0.02	0.05	0.21	0.21	0.19	0.21	
MINIMUM	-	-	0	0	0.01	0.11	0.11	0.11	0.11	

Precipitation Summary for CA - San Diego CWA

Location	Network	Date	Hour(UTC)									
CA - San Diego CWA	RAWS	Current	November	2003	19:00	Change S						
Valid 10/2/2003 19:00 through 11/1/2003 19:00 UTC			Sort by elevation		Help							
CA042: Orange County Coastal Areas												
Station	Info	2 days	5 days	7 days	10 days	30 days	0.01"	0.10"	0.25"	0.50"	1.00"	
CAPCI	RAWS 699 ft	0.63	0.68	0.68	0.68	0.68	0	0	0	0	201	
BELL CANYON												
FRCCI	RAWS 1781 ft	0.24	0.24	0.24	0.24	0.24	0	0	182	201	201	
FREMONT CANYON												
CA043: San Diego County Coastal Areas												
Station	Info	2 days	5 days	7 days	10 days	30 days	0.01"	0.10"	0.25"	0.50"	1.00"	
LSFC1	RAWS 98 ft	0.13	0.21	0.21	0.21	0.21	0	0	316	316	316	
LSF LAS FLORES												
CA048: San Bernardino and Riverside County Valleys -The Inland Empire												
Station	Info	2 days	5 days	7 days	10 days	30 days	0.01"	0.10"	0.25"	0.50"	1.00"	
BNTC1	RAWS 2680 ft	0.22	0.22	0.22	0.22	0.22	0	0	-	-	-	
BEAUMONT												
CLHC1	RAWS 1719 ft	0.11	0.11	0.11	0.11	0.11	0	0	182	201	201	
CLARK												
CNAC1	RAWS 640 ft	0.28	0.28	0.28	0.28	0.28	0	0	0	201	201	
CORONA												
CNSC1	RAWS 1949 ft	0.15	0.15	0.15	0.15	0.15	0	0	201	201	201	
CRANSTON												
DVOCI	RAWS 2080 ft	0.34	0.34	0.34	0.34	0.41	0	0	0	182	182	
DEVORE												
TSCCI	RAWS 1125 ft	0.20	0.20	0.20	0.20	0.20	0	0	182	201	201	
TEMESCAL (CNF)												
MAXIMUM	-	0.34	0.34	0.34	0.34	0.41						
ZONE AVERAGE	-	0.22	0.22	0.22	0.22	0.23						
MINIMUM	-	0.11	0.11	0.11	0.11	0.11						

Weather Near Fires



[Past Fires](#)

[Help](#)

Click on a GACC name below to see a map of active fires

Alaska	No Fires ▾	<input type="button" value="submit"/>
Pacific Northwest	No Fires ▾	<input type="button" value="submit"/>
Northern California	Ord (Contained) ▾	<input type="button" value="submit"/>
Southern California	CEDAR ▾	<input type="button" value="submit"/>
Western Great Basin	No Fires ▾	<input type="button" value="submit"/>
Eastern Great Basin	Swift_Creek_WFU (Contained) ▾	<input type="button" value="submit"/>
Northern Rockies	No Fires ▾	<input type="button" value="submit"/>
Rocky Mountain	Cherokee_Ranch (Contained) ▾	<input type="button" value="submit"/>
Southwest	SKI_RUN ▾	<input type="button" value="submit"/>
Eastern	No Fires ▾	<input type="button" value="submit"/>
Southern	PHINNEY_HILL ▾	<input type="button" value="submit"/>

Figure 7. ROMAN Weather Near Fires entry page.

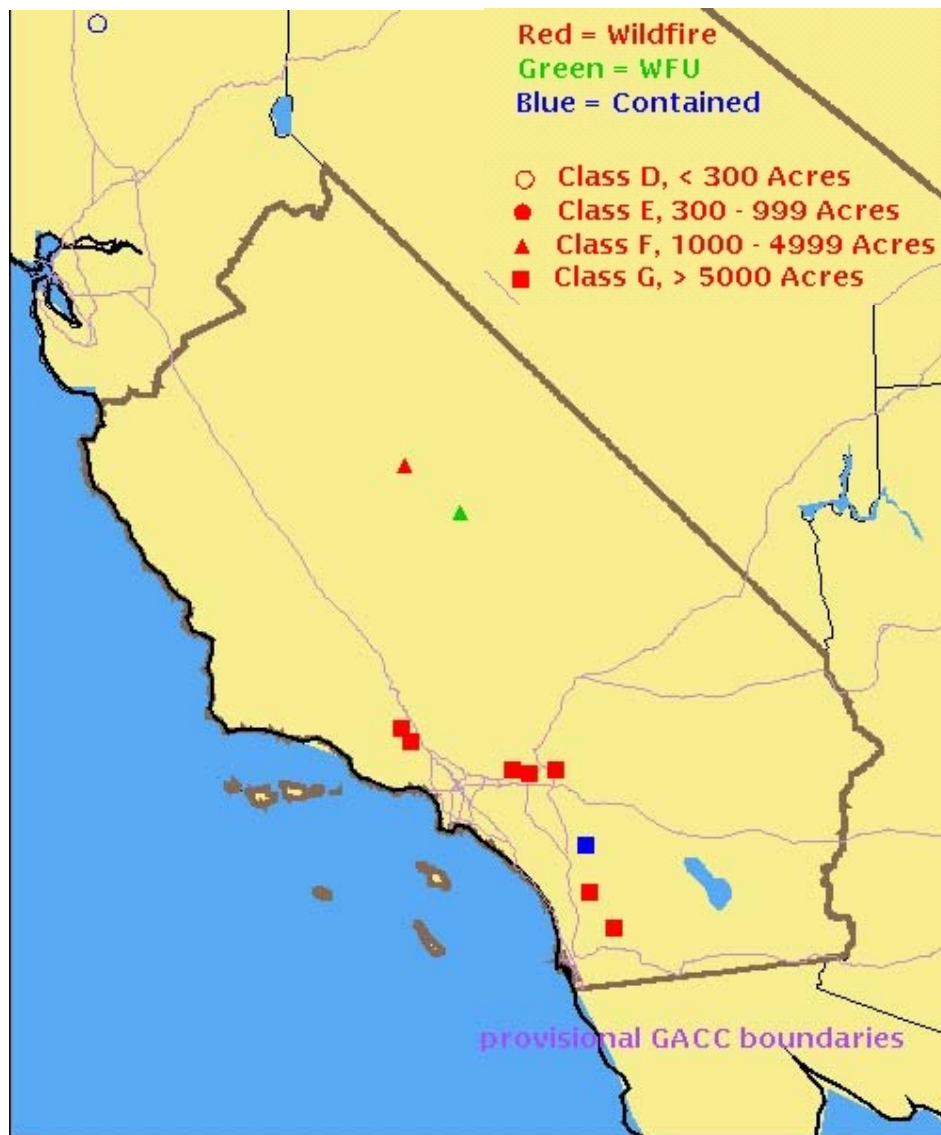


Figure 8. Locations of major fires on 1 Nov. 2003 for the southern California GACC.

Table 6. Weather in the vicinity of the Cedar fire. The total acreage refers to the final estimate rather than the size of the fire at 1200 UTC 26 October.

CEDAR Fire: Latitude 32.986 Longitude -116.728 280278 acres

([Fire location](#) provided by: [TopoZone](#))

Historic 24-Hour Trend Monitor (click [here](#) to reset to current time)

Settings: -h Summary mi Radius
 Time: :00 UTC / /

24-Hour Changes 12:00 UTC 10/26/2003 Sort by: [name](#) or [elevation](#) [Help](#) [QC Flag: Ok, Caution, Suspect](#)

Station	Info	Dist/Dir	Time	Temp	DewT	RH	Dir	Spd	Gust
PIHC1 PINE HILLS	RAWS 3599 ft	6 mi ENE	1110Z 3:10PST 1010Z 2:10PST	66/+ 15 61/	29/+ 12 25/	25/- 1 25/	E / SE N/	9/+ 8 4/	18/+ 12 17/
GOSC1 GOOSE VALLEY	RAWS 1529 ft	9 mi NW	1155Z 3:55PST 1055Z 2:55PST	77/+ 28 77/+ 27	5/- 22 8/- 20	6/- 36 7/- 35	ENE / S ENE / N	15/+ 15 13/+ 13	26/+ 26 30/+ 30
JULC1 JULIAN	RAWS 4239 ft	10 mi NE	1110Z 3:10PST 1010Z 2:10PST	64/+ 8 64/	14/- 12 17/	14/- 17 16/	E / S E/	17/+ 17 17/	35/+ 34 34/
ANEC1 ALPINE	RAWS 2041 ft	11 mi S	1150Z 3:50PST 1050Z 2:50PST	75/+ 13 75/+ 11	3/- 18 7/- 17	6/- 15 7/- 14	ENE / SE NE / ENE	9/+ 9 7/+ 6	28/+ 20 20/+ 12
DENC1 DESCANSO	RAWS 3481 ft	11 mi SE	1130Z 3:30PST 1030Z 2:30PST	67/+ 40 68/+ 15	1/- 26 5/- 13	7/- 91 8/- 16	NE / NW NNE / WSW	14/+ 14 7/+ 7	27/+ 27 22/+ 18
MLGC1 MT. LAGUNA	RAWS 5761 ft	19 mi ESE	1200Z 4:00PST 1100Z 3:00PST	55/+ 13 57/+ 16	-1/- 22 1/- 19	10/- 34 10/- 33	NNE / NNE WSW / NE	8/+ 8 5/+ 5	21/+ 21 21/+ 21
RCHC1 RANCHITA	RAWS 4180 ft	20 mi NE	1110Z 3:10PST 1010Z 2:10PST	58/- 5 58/	13/- 8 15/	17/- 3 18/	ENE / N E/	5/+ 1 4/	8/+ 2 8/
VLCC1 VALLEY CENTER	RAWS 1371 ft	23 mi NW	1110Z 3:10PST 1010Z 2:10PST	78/+ 28 82/	9/- 27 4/	7/- 52 5/	SSE / N NNE/	3/+ 3 13/	28/+ 26 40/
CMNC1 CAMERON FIRE S	RAWS 3442 ft	24 mi SE	1200Z 4:00PST 1100Z 3:00PST	69/+ 23 68/+ 19	-1/- 17 -2/- 19	6/- 24 6/- 22	NE / S NE / S	10/+ 10 14/+ 14	28/+ 24 29/+ 25
NS086 SAN MIGUEL	RAWS 463 ft	25 mi SSW	1150Z 3:50PST 1050Z 2:50PST	84/+ 28 74/+ 18	10/- 46 25/- 30	6/- 92 16/- 82	NE / N NNE / SSW	10/+ 8 2/- 1	17/+ 13 6/+ 2

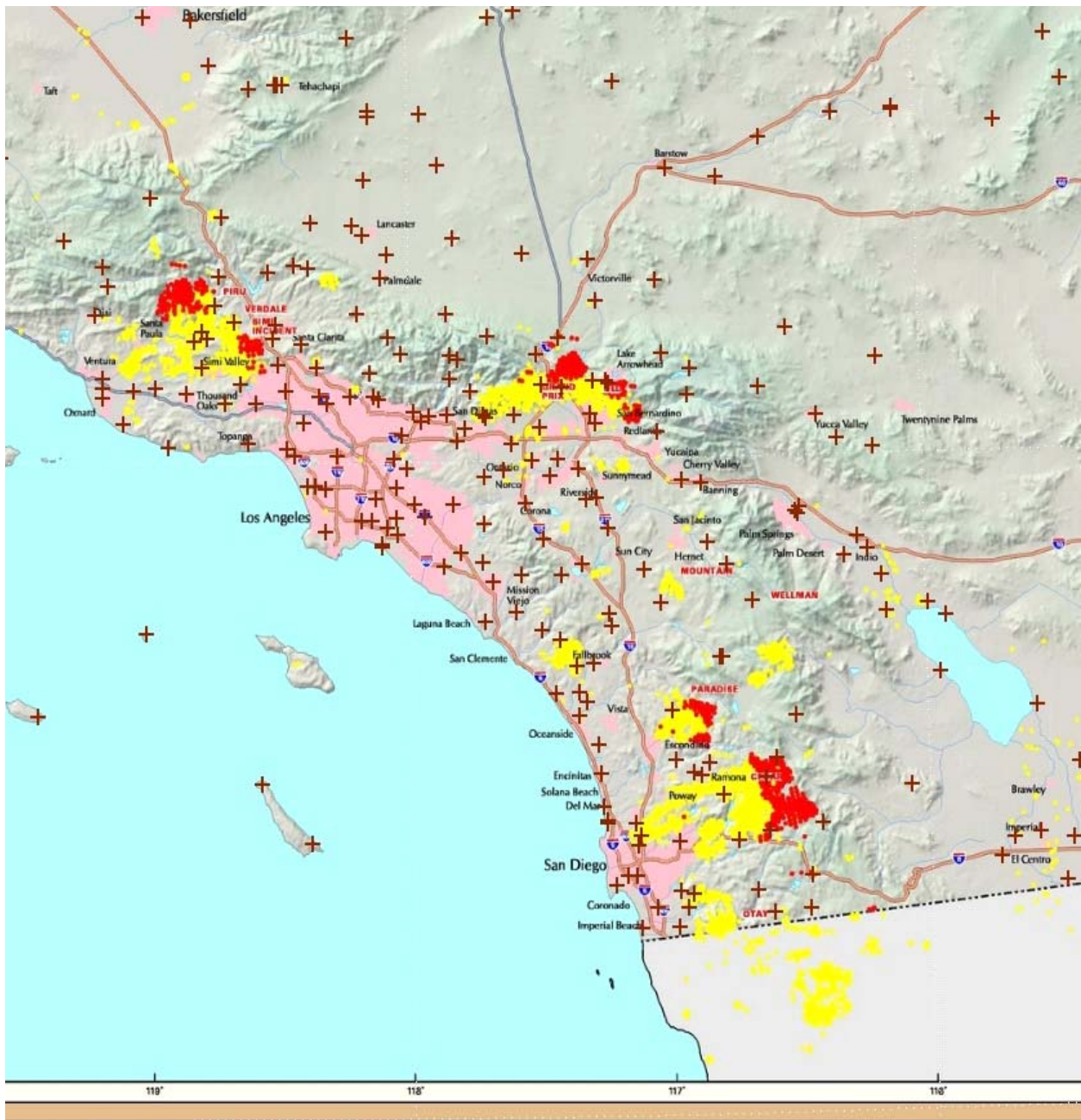


Figure 9. ROMAN MODIS interface. Superposition of ROMAN station locations (plus symbols) upon MODIS active fire map on 29 October 2003. Light shading denotes previously burned areas while dark shading denotes areas burning within the past 24 hours. The ROMAN MODIS interface allows access to station information and current weather information by selecting one of the plus symbols.

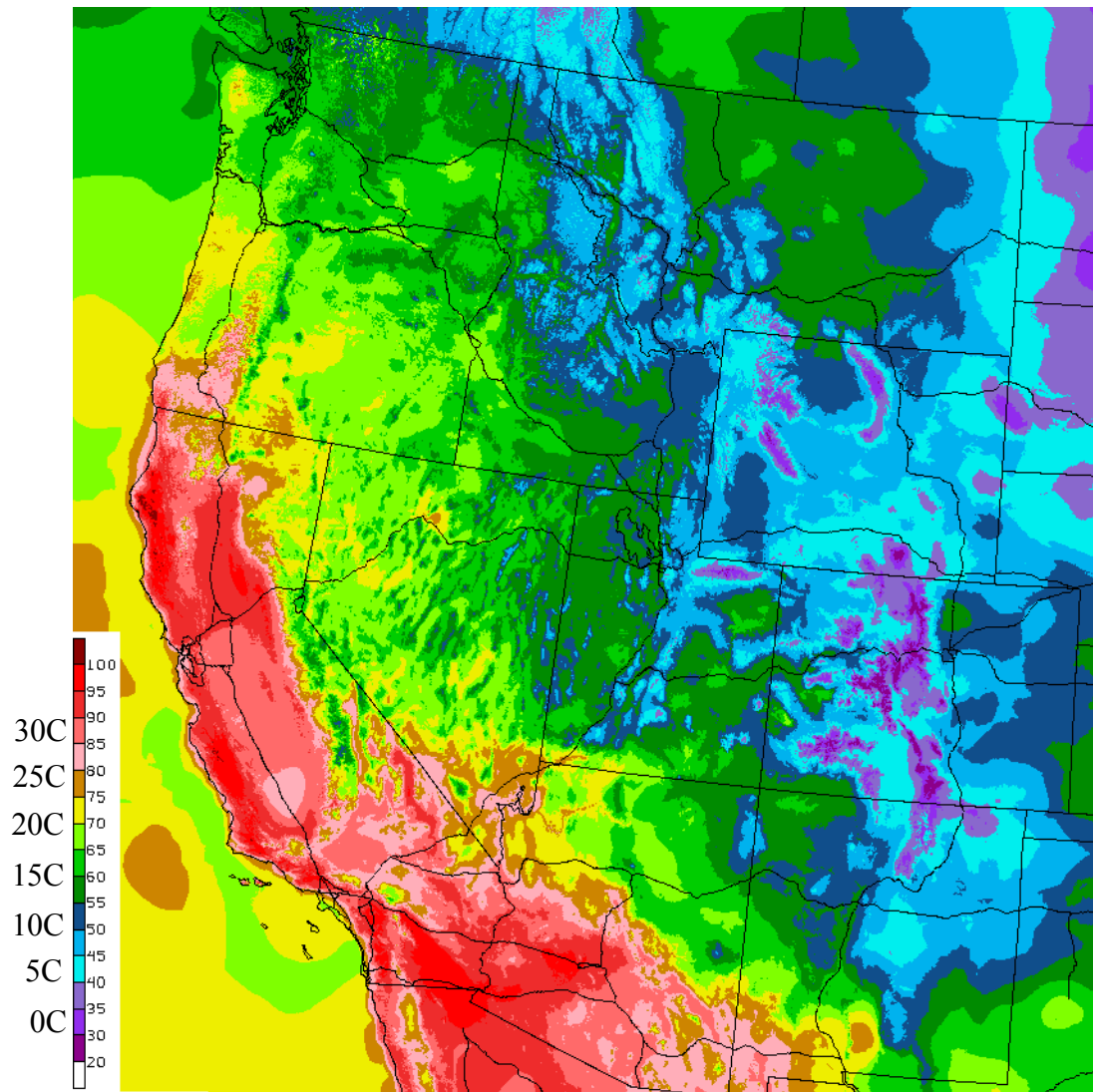


Figure 10. Maximum temperature between 1200 UTC 25 - 1200 UTC 26 October 2003 based on hourly ADAS 2.5 km analyses. Temperature plotted according to the scale at the left.