

Superstorm

Scientists warn California could be struck by winter 'superstorm' - Yahoo! News - Mozilla Firefox

Scientists warn California could be str...

Mon Jan 17, 9:49 am ET

Scientists warn California could be struck by winter 'superstorm'

By Liz Goodwin



Buzz up! 1105 votes



Share 159K



retweet 3252



Email



Print



TAKE A LOOK

- ▶ DOWNLOAD BROCHURE
- ▶ VIEW PHOTOS
- ▶ 360 VIEWS AND COLORS

SHOPPING TOOLS

- ▶ BUILD YOURS
- ▶ ESTIMATE PAYMENT
- ▶ FIND A DEALER

ROLLOVER [HERE](#) FOR MORE INFO

THE LOOKOUT



Follow The Lookout on Twitter

Subscribe: Add to My! Yahoo | RSS Feed

Featured Stories



GOP using debt-ceiling debate as leverage for spending cuts

Zachary Roth, January 17, 3:01 pm ET

What did the oil spill commission report leave out?

Brett Michael Dykes, January 17, 2:25 pm ET

Will Loughner be tried in Arizona?

Liz Goodwin, January 17, 10:47 am ET

[More from The Lookout](#)

Text on Reserve

- Course Reserve

Assignment Due Dates

- Class Notes 1 review questions due **Jan. 25**
- COMET MODULE
<http://www.meted.ucar.edu/afwa/climo/statst/>. Due January 25
- Thursday will get started on evaluating PCAPS data

The zen of programming

- Understand what you are expected to do
- Don't start from scratch- use example codes or search for examples
- Read text, look online for techniques and tricks
- There is never only one way to do something- build on what you are comfortable with but seek simpler ways

Debugging

- Programming is iterative
- Start from what works.
 - Get example code working first
- What did you change?
- Have you looked at the underlying data file?
- Have you looked at the workspace variables?
- Did you display some intermediate values?
- Don't assume that if your code runs that it is correct. Does the output make sense?
- Don't expect others to debug your code for you
 - Programming can be like solving a puzzle- it appears hard while you're doing it, but you get some great "ah ha" moments once you've figured it out for yourself
- Being able to work independently and solve problems is critical

Figure 1

File Edit View Insert Tools Desktop Window Help

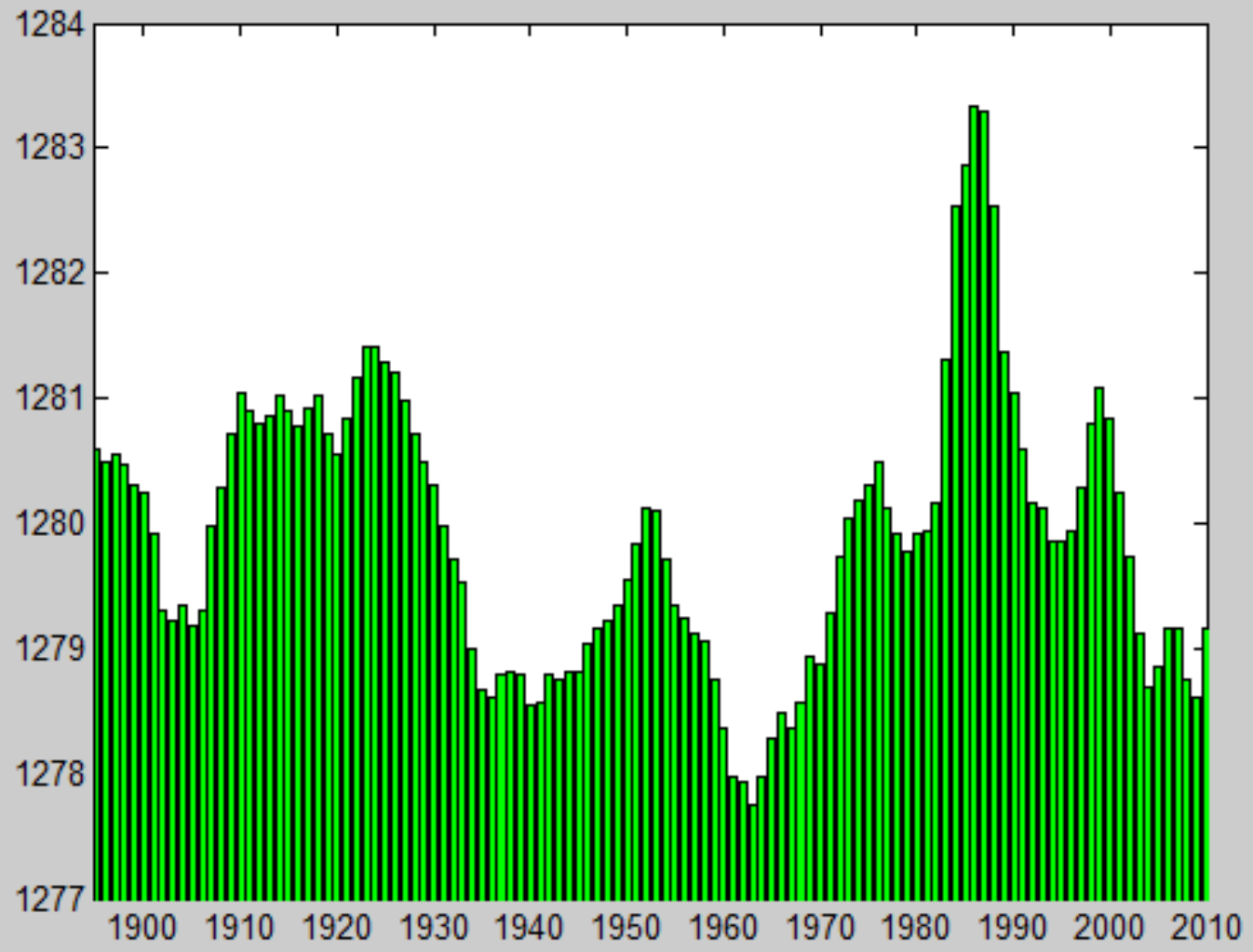


Figure 2

File Edit View Insert Tools Desktop Window Help

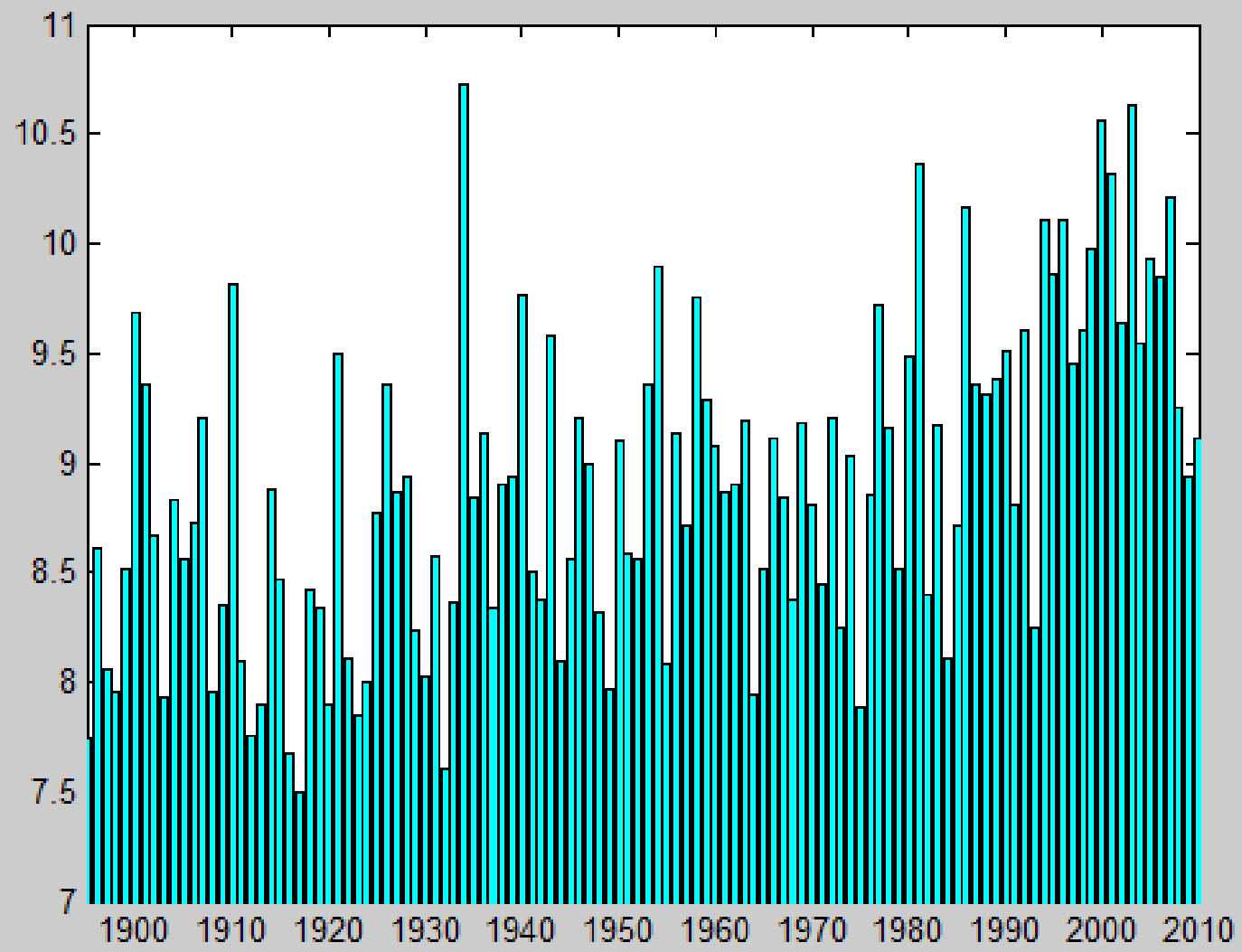


Figure 3

File Edit View Insert Tools Desktop Window Help

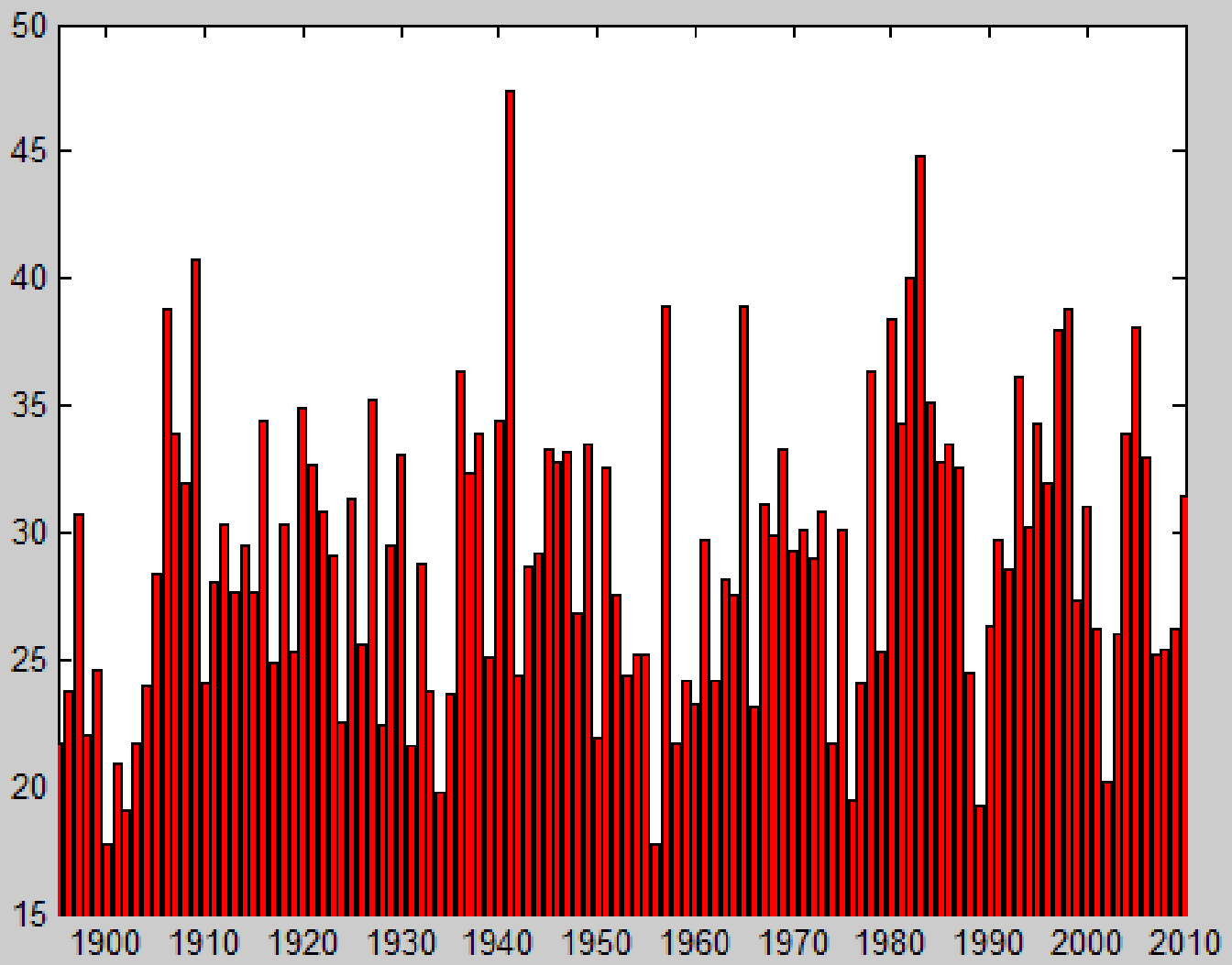


Figure 4

File Edit View Insert Tools Desktop Window Help

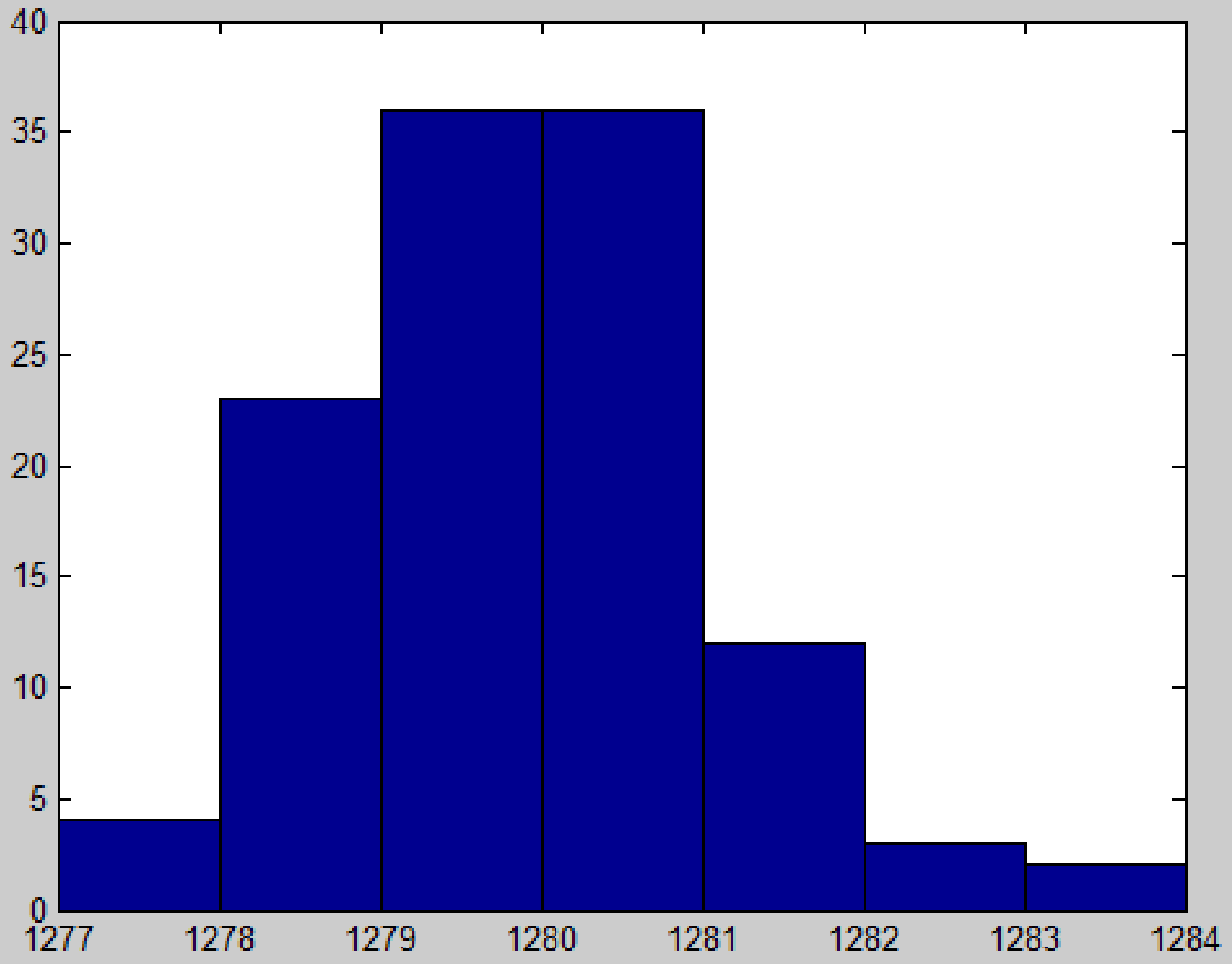
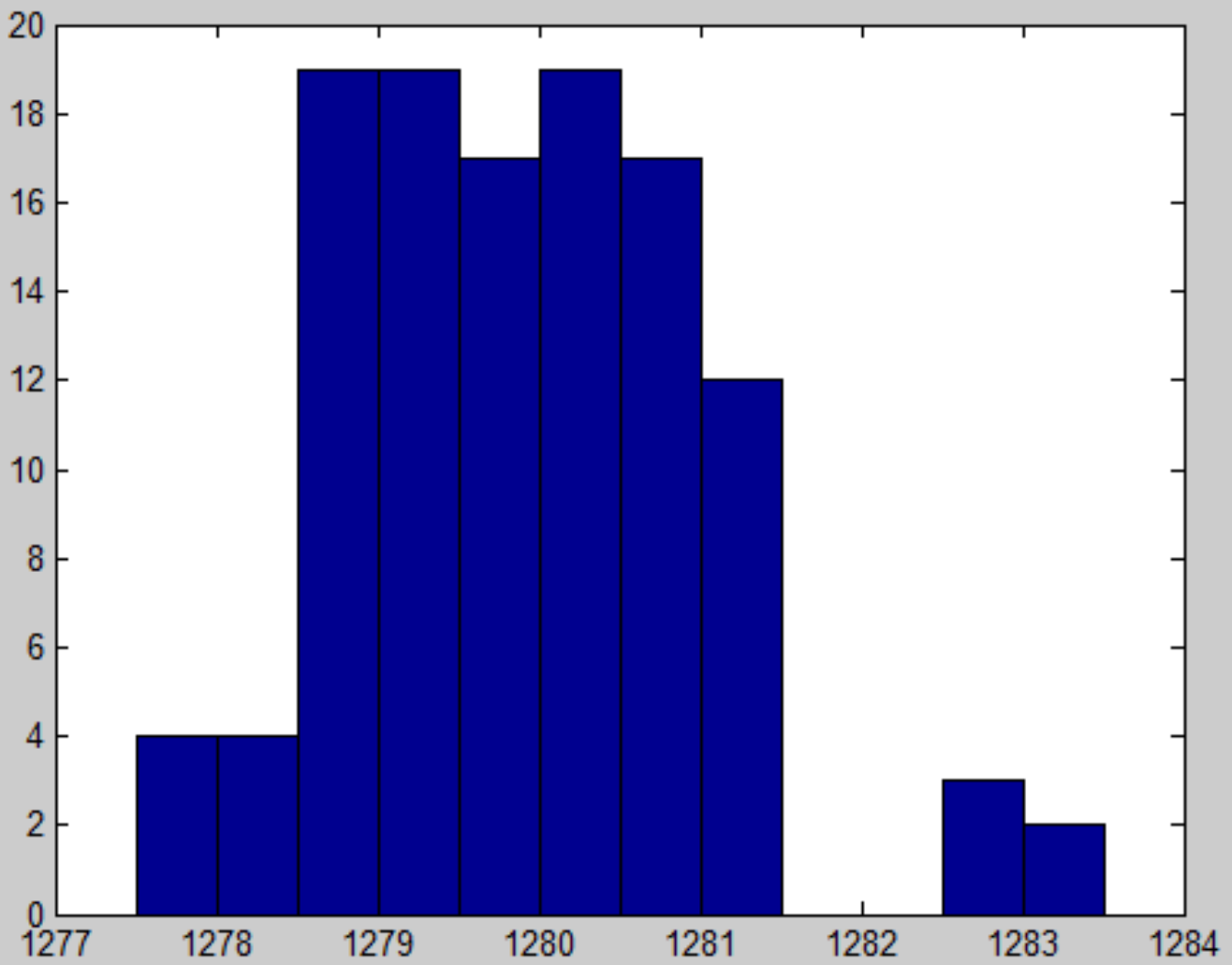


Figure 5

File Edit View Insert Tools Desktop Window Help

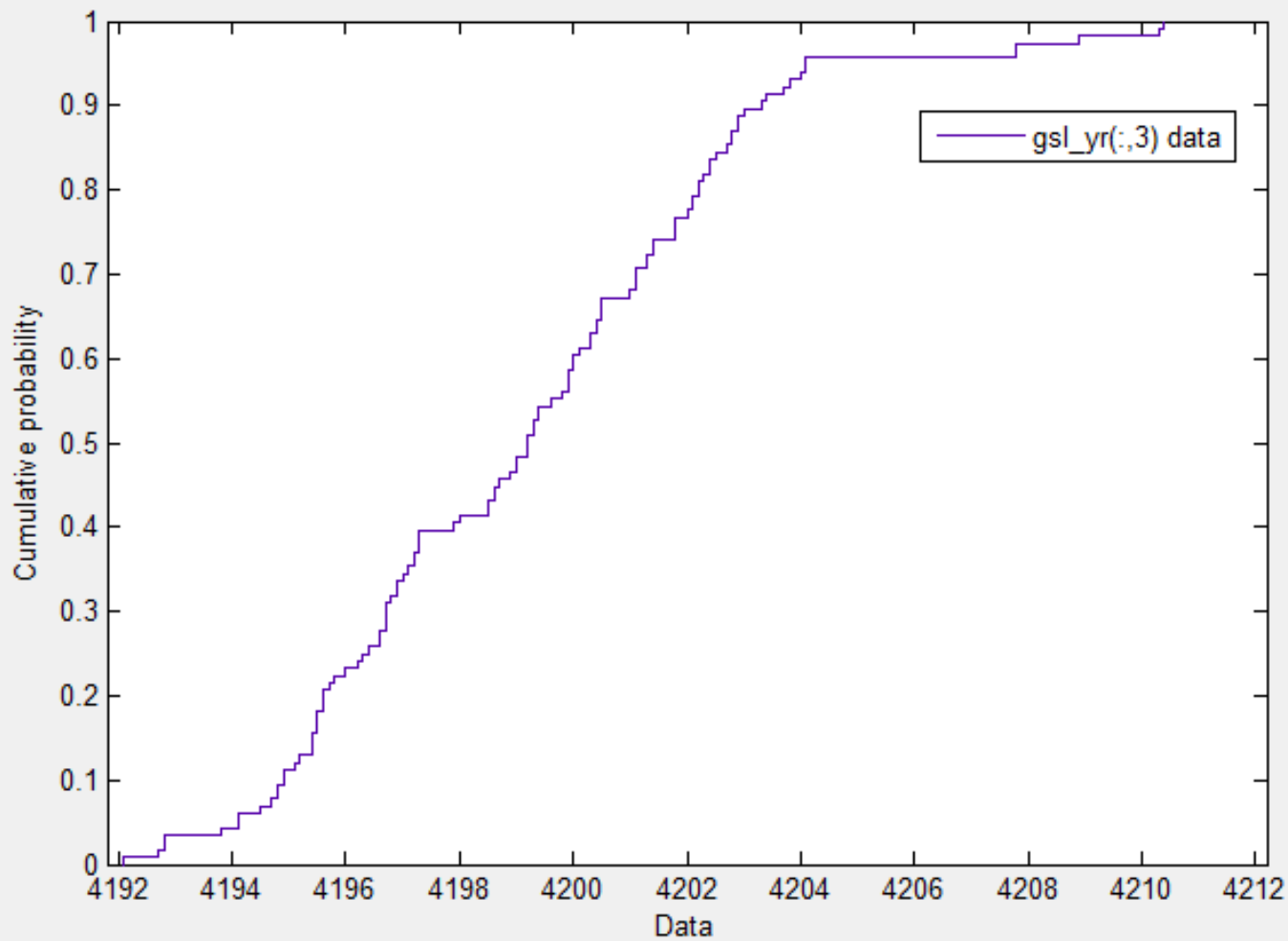


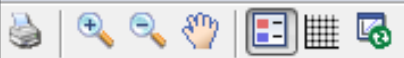


Display type: Cumulative probability (CDF) ▾

Distribution: Normal ▾

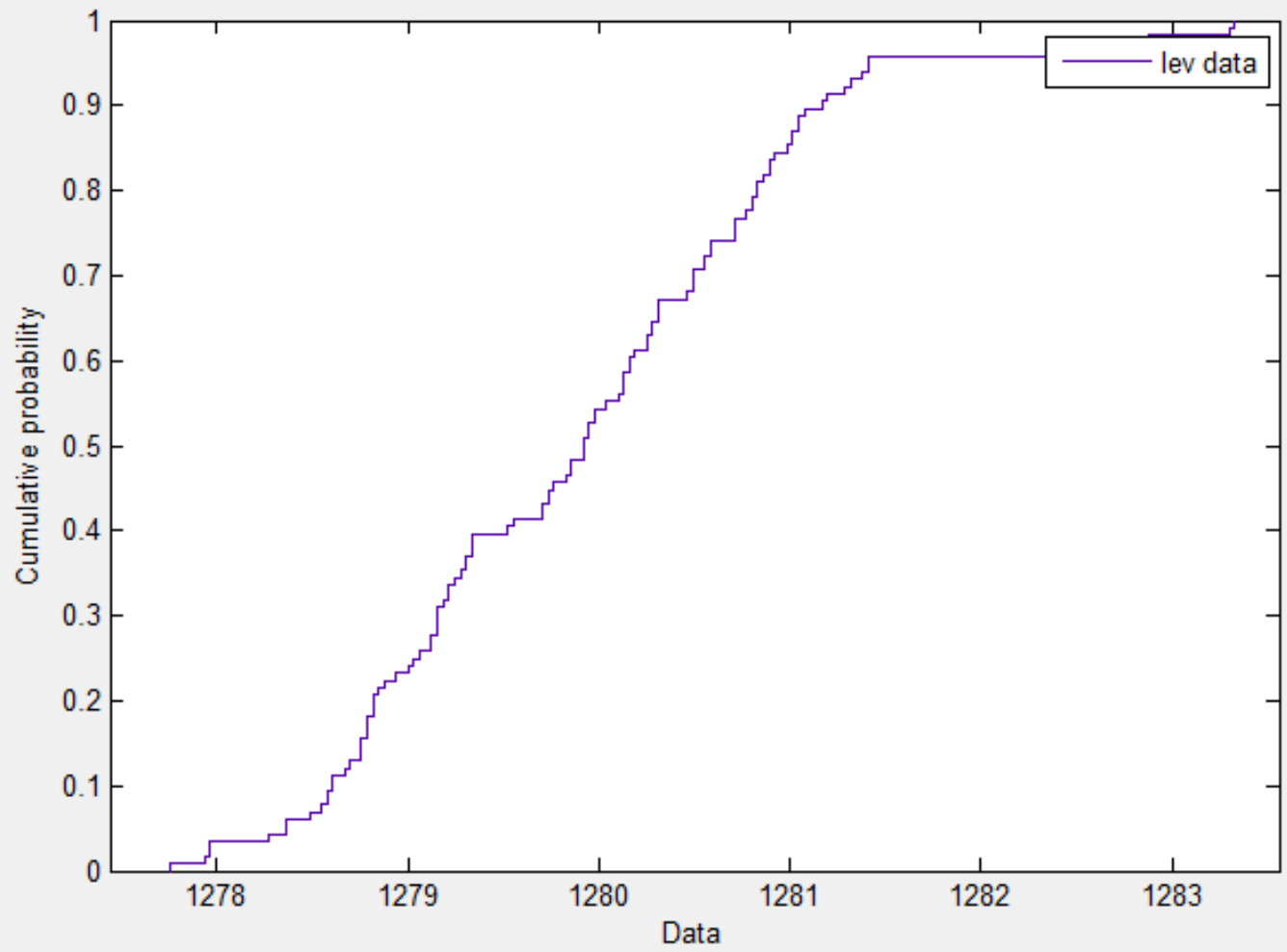
Data... New Fit... Manage Fits... Evaluate... Exclude...





Display type: Cumulative probability (CDF) Distribution: Normal

Data... New Fit... Manage Fits... Evaluate... Exclude...



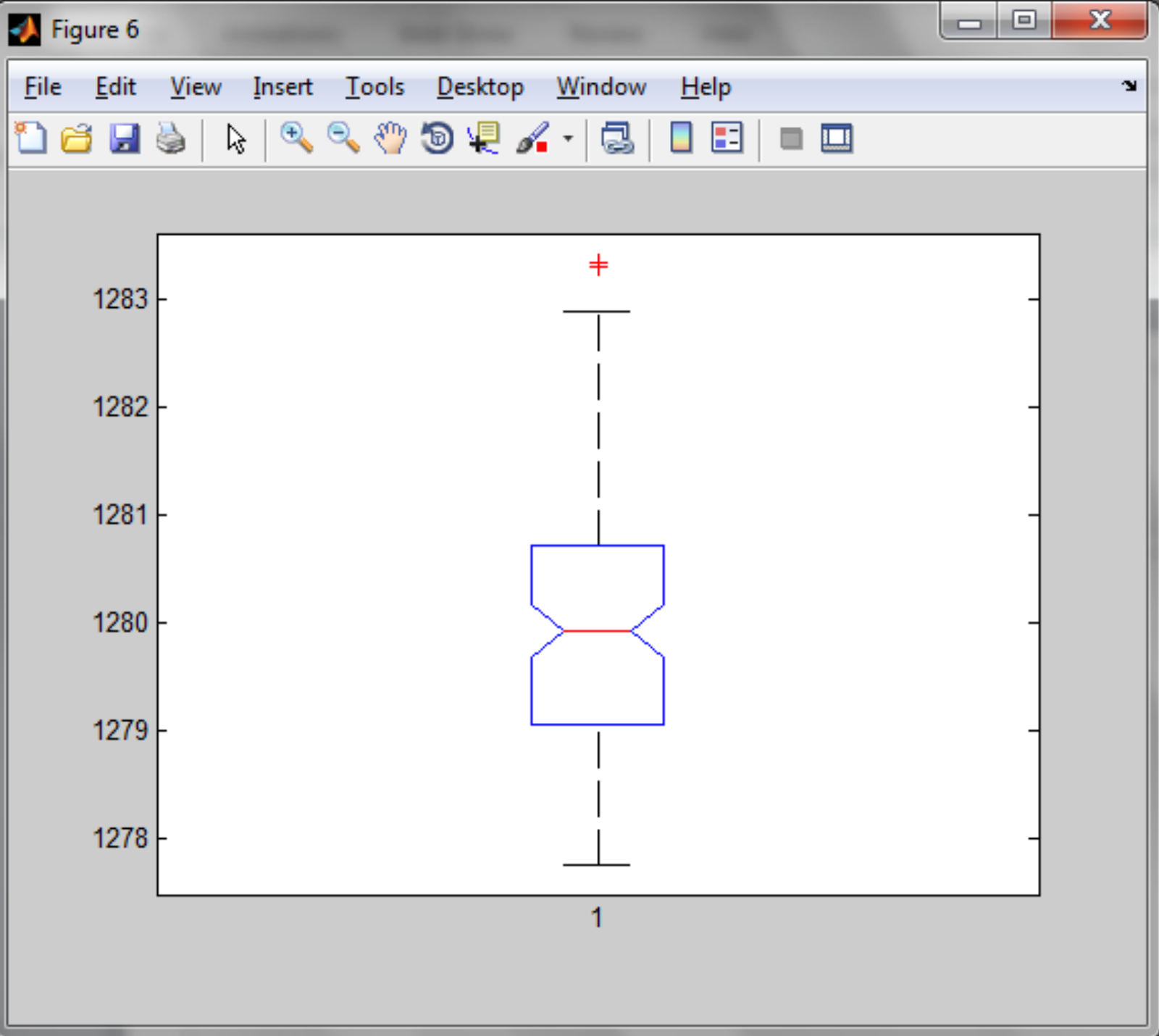
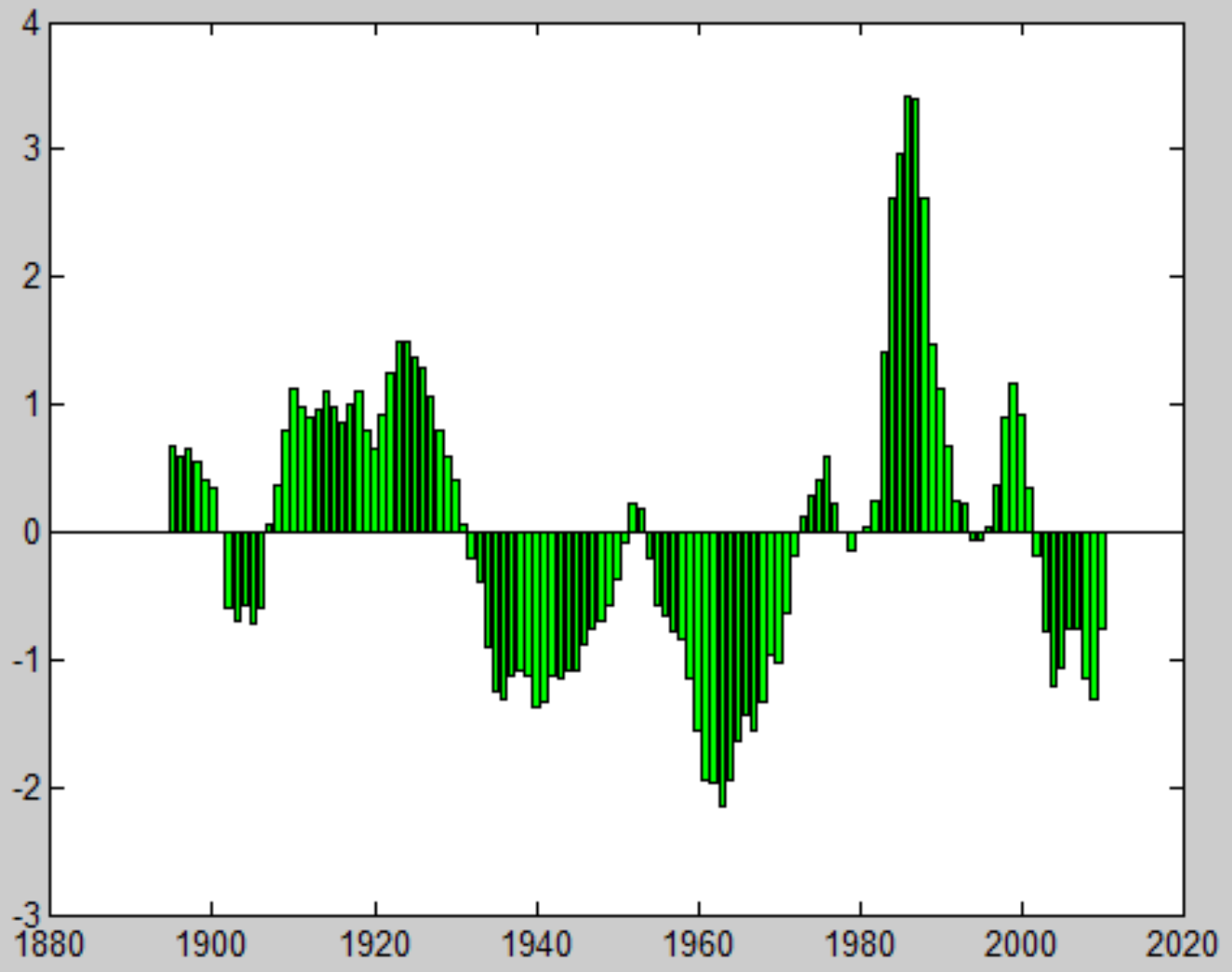


Figure 9

File Edit View Insert Tools Desktop Window Help



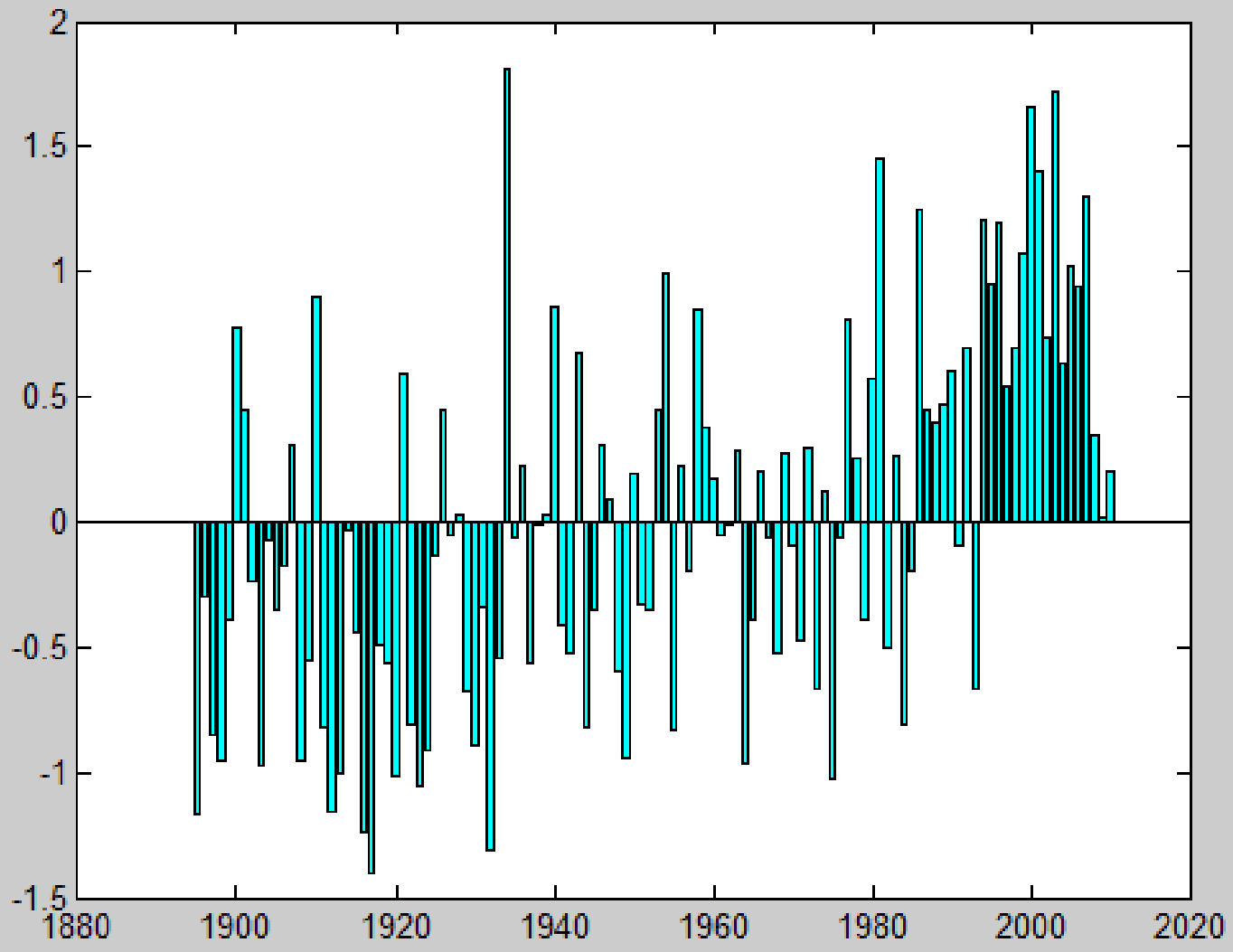


Figure 13

File Edit View Insert Tools Desktop Window Help

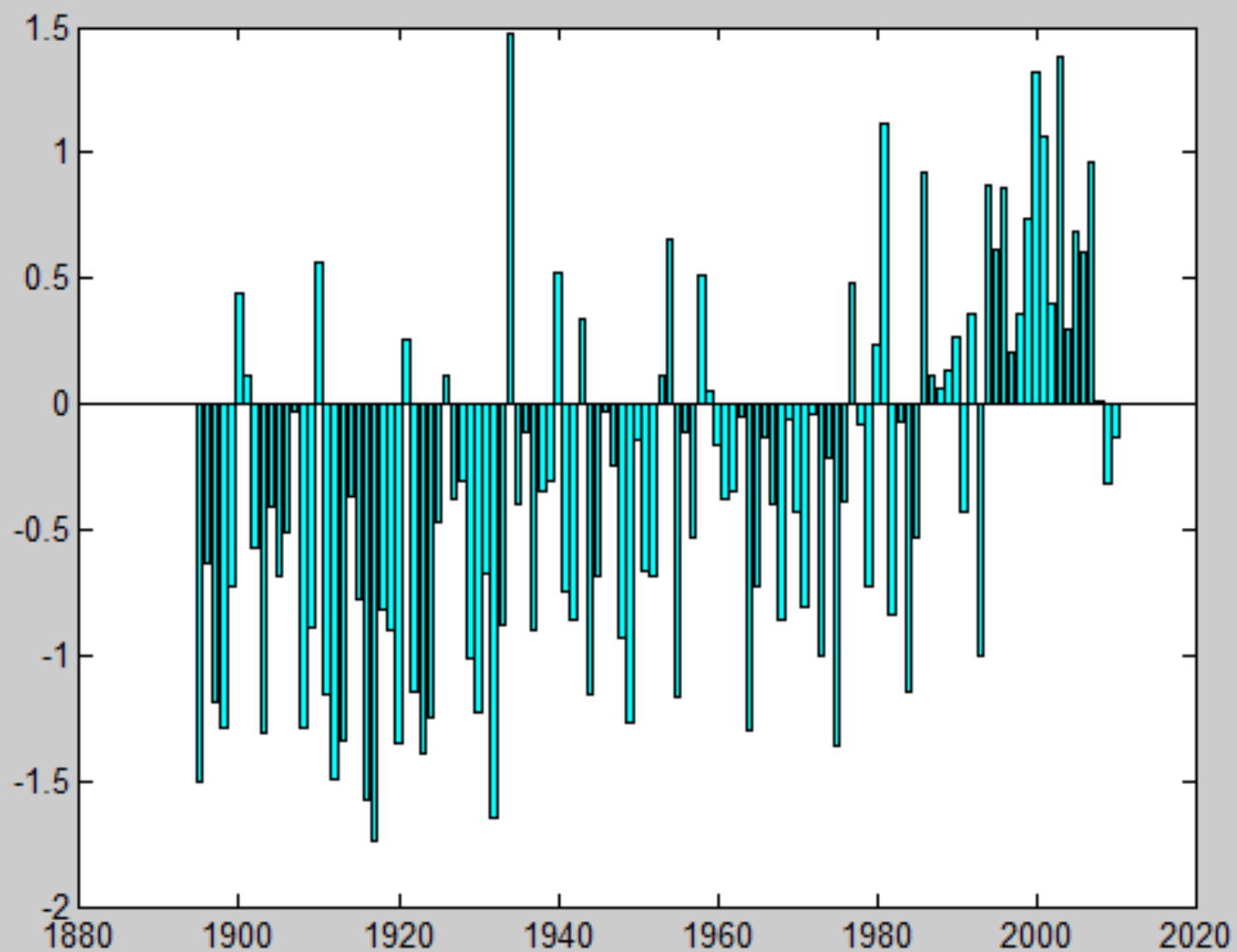


Figure 11

File Edit View Insert Tools Desktop Window Help

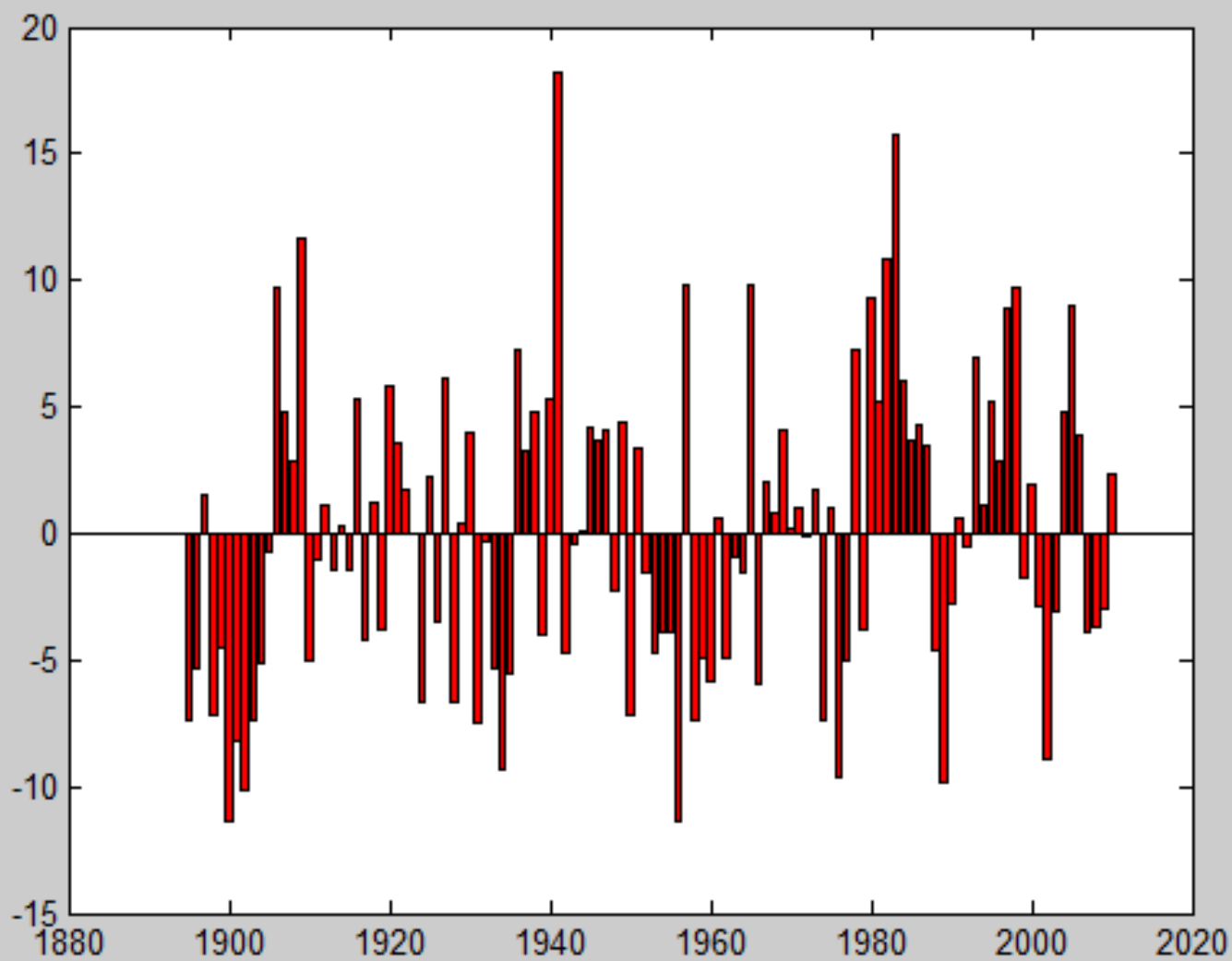


Figure 2

File Edit View Insert Tools Desktop Window Help

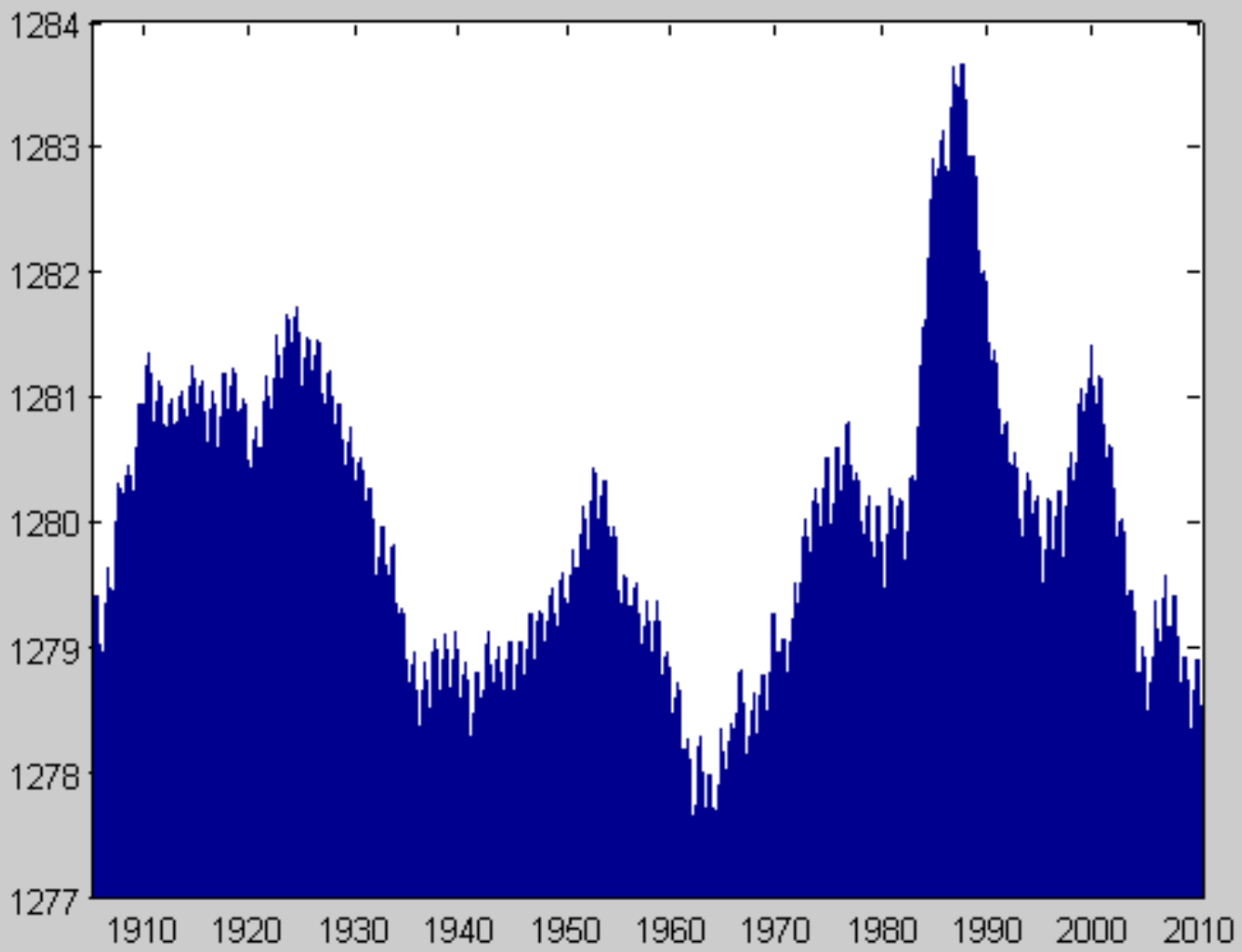


Figure 1

File Edit View Insert Tools Desktop Window Help

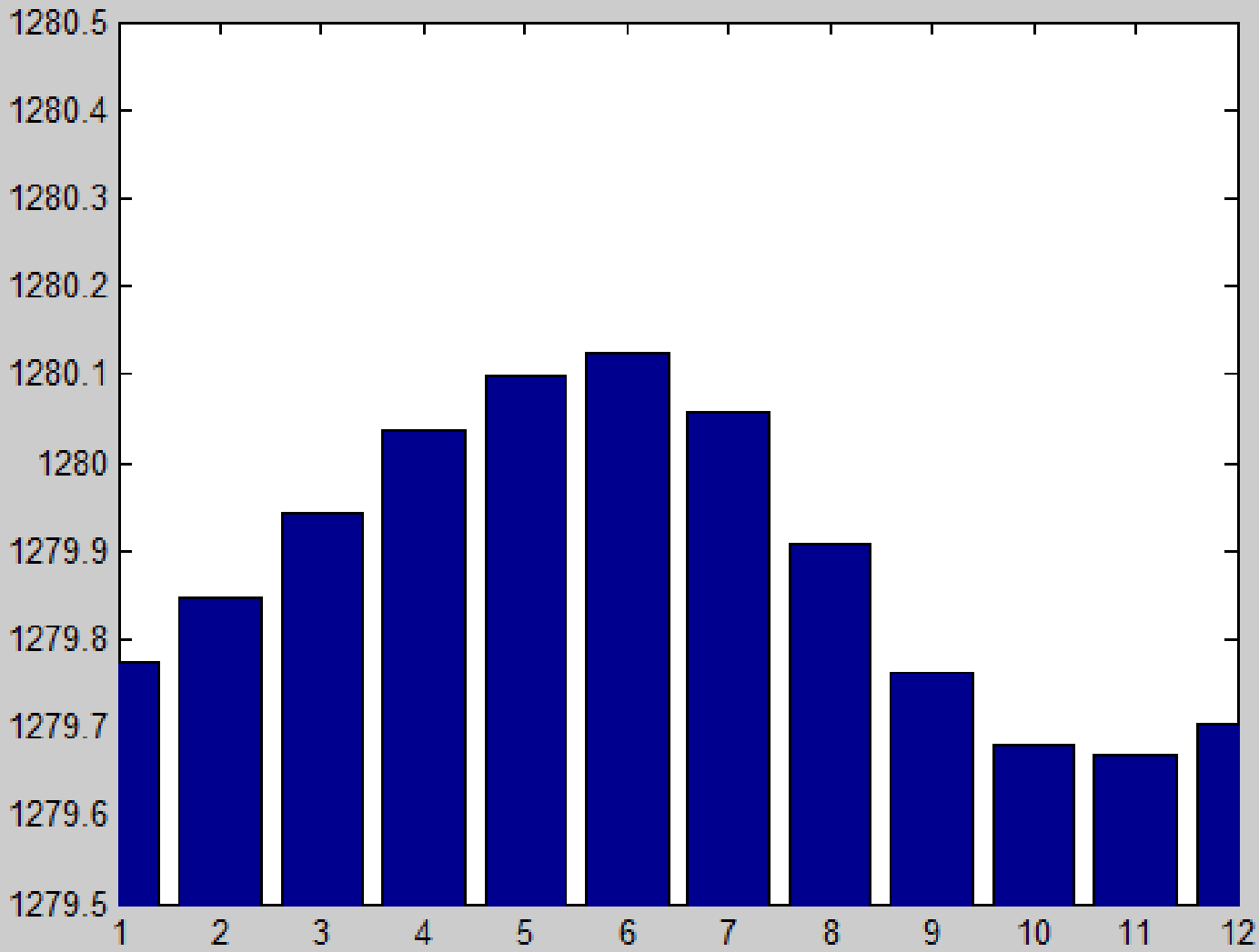
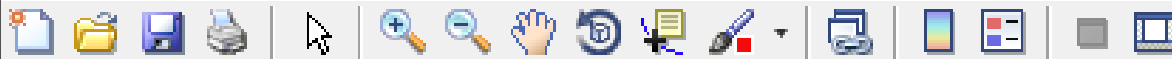
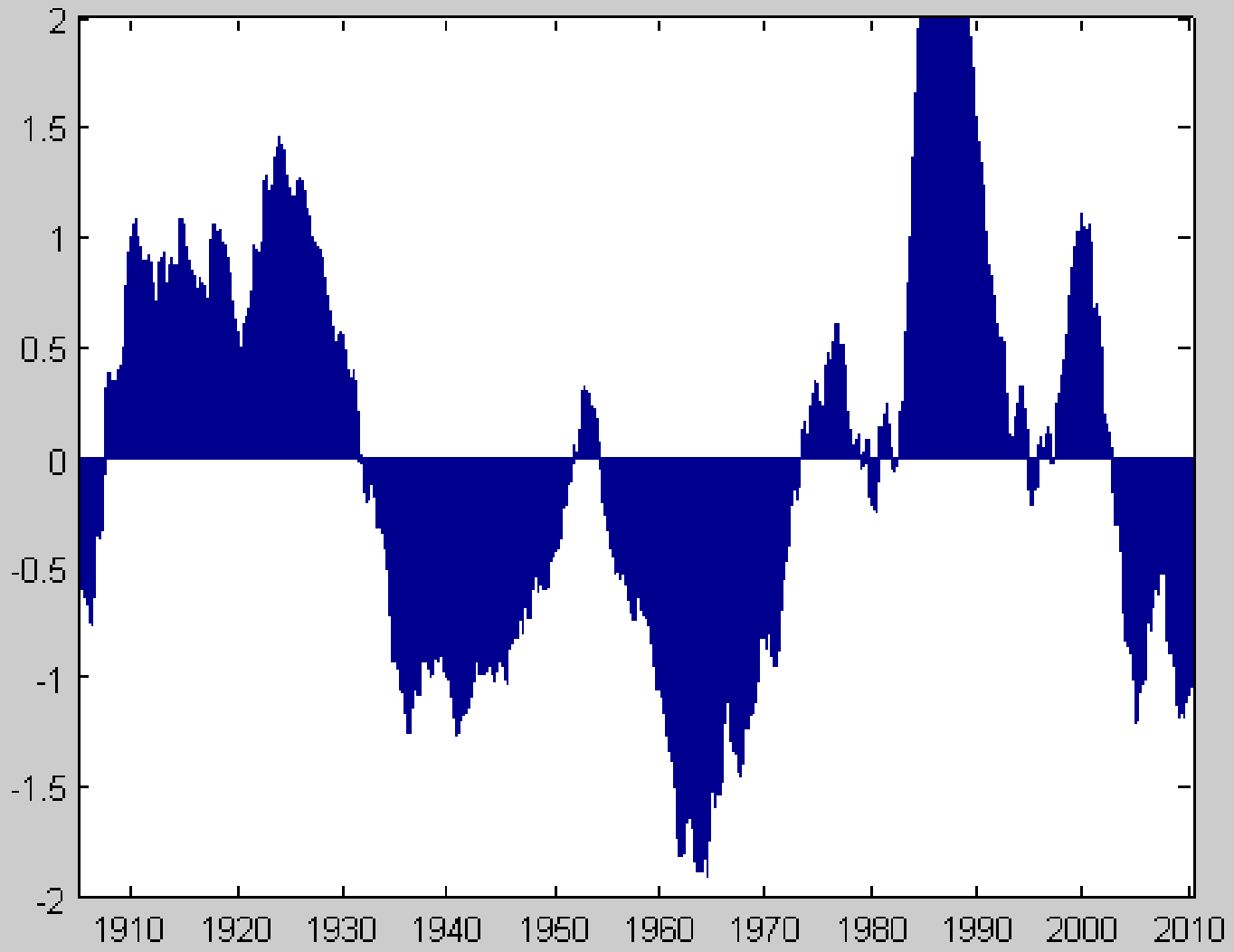


Figure 3

File Edit View Insert Tools Desktop Window Help



Variations in Lake Level



2004

"HONEY, THEY SHRUNK THE LAKE!"

Hat Island



D. Judd



Distribution Fitting Tool

File View Tools Window Help



Display type: Cumulative probability (CDF) ▾

Distribution: Normal ▾

Data... New Fit... Manage Fits... Evaluate... Exclude...

