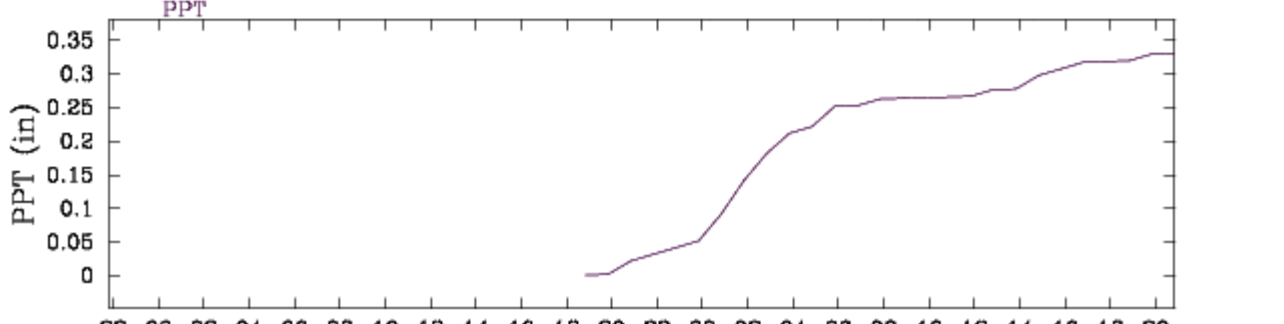
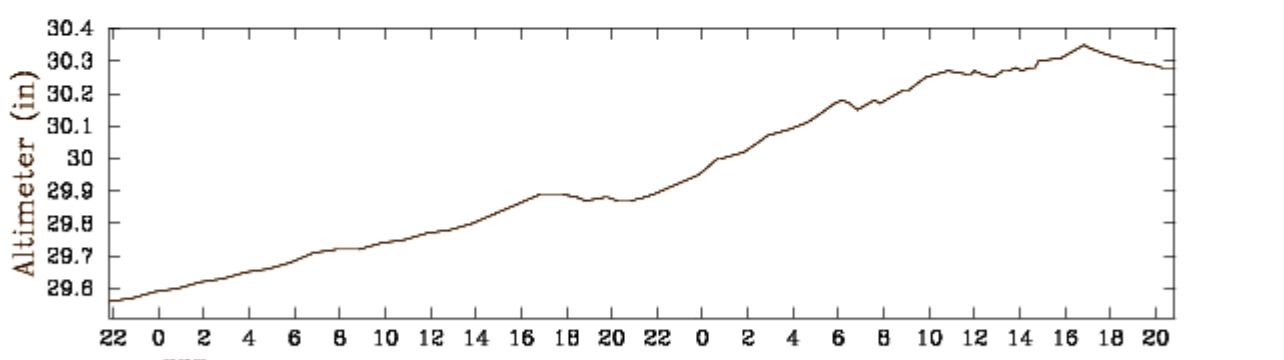
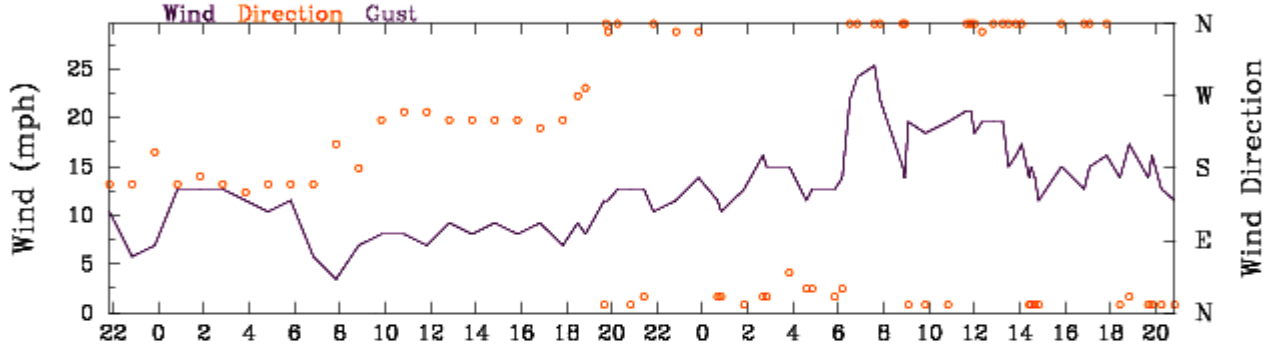
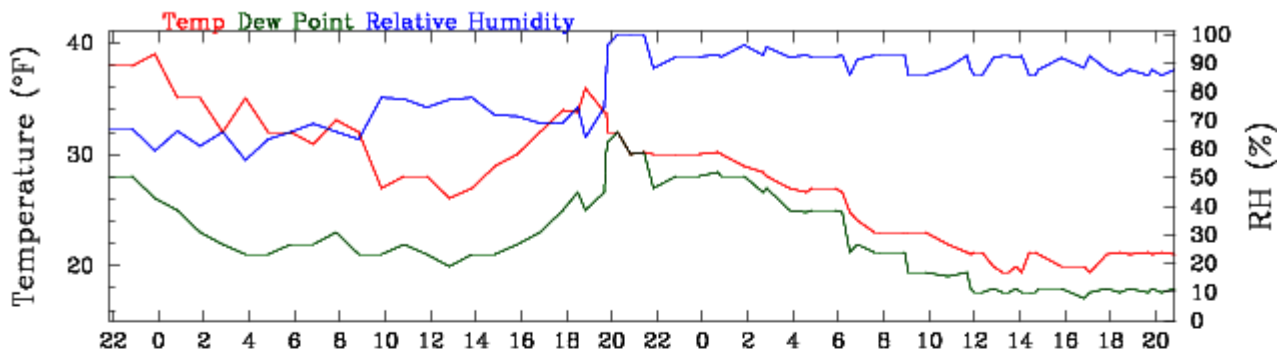


Denver International Airport
Start 12/27/06 21:50 (GMT) -End 12/29/06 20:50 (GMT)



72469 DNR Denver

100

200

300

400

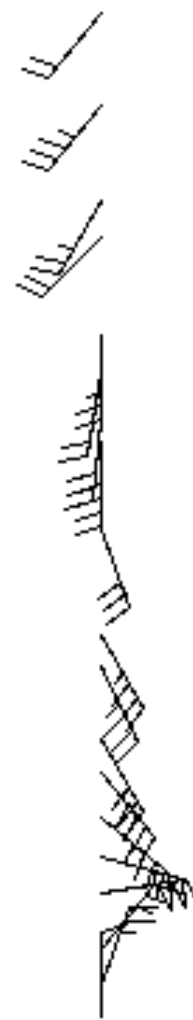
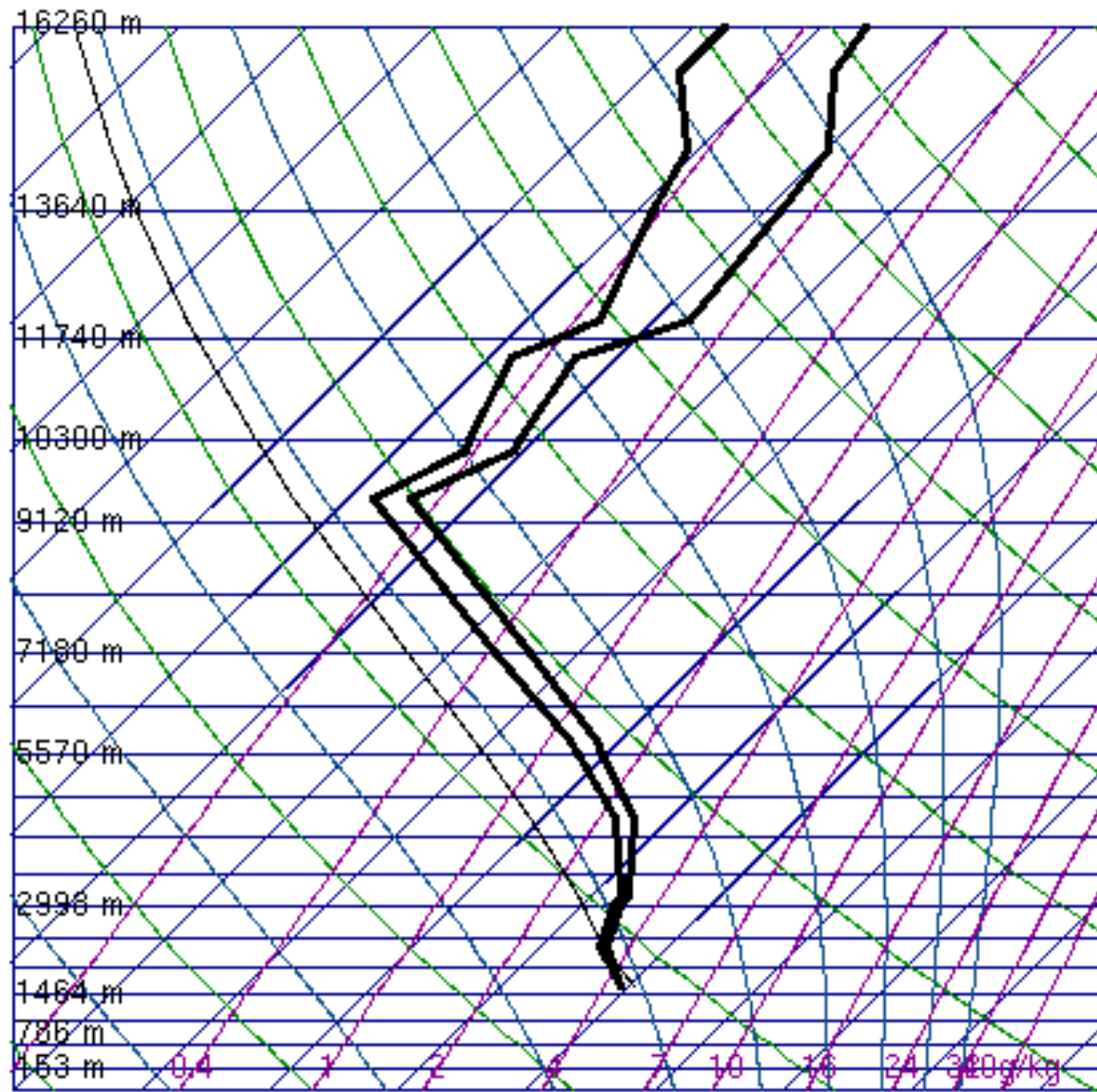
500

600

700

800

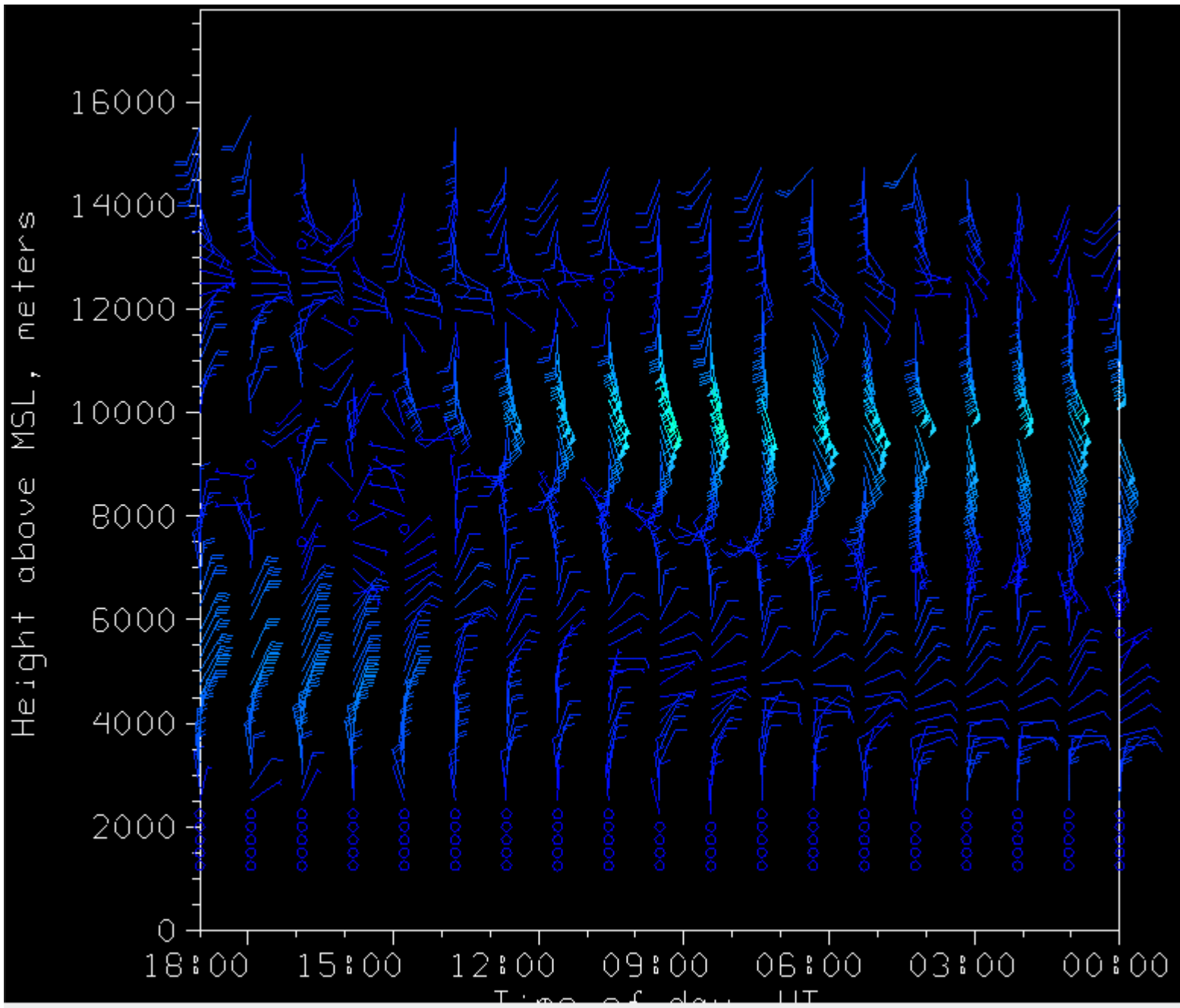
900

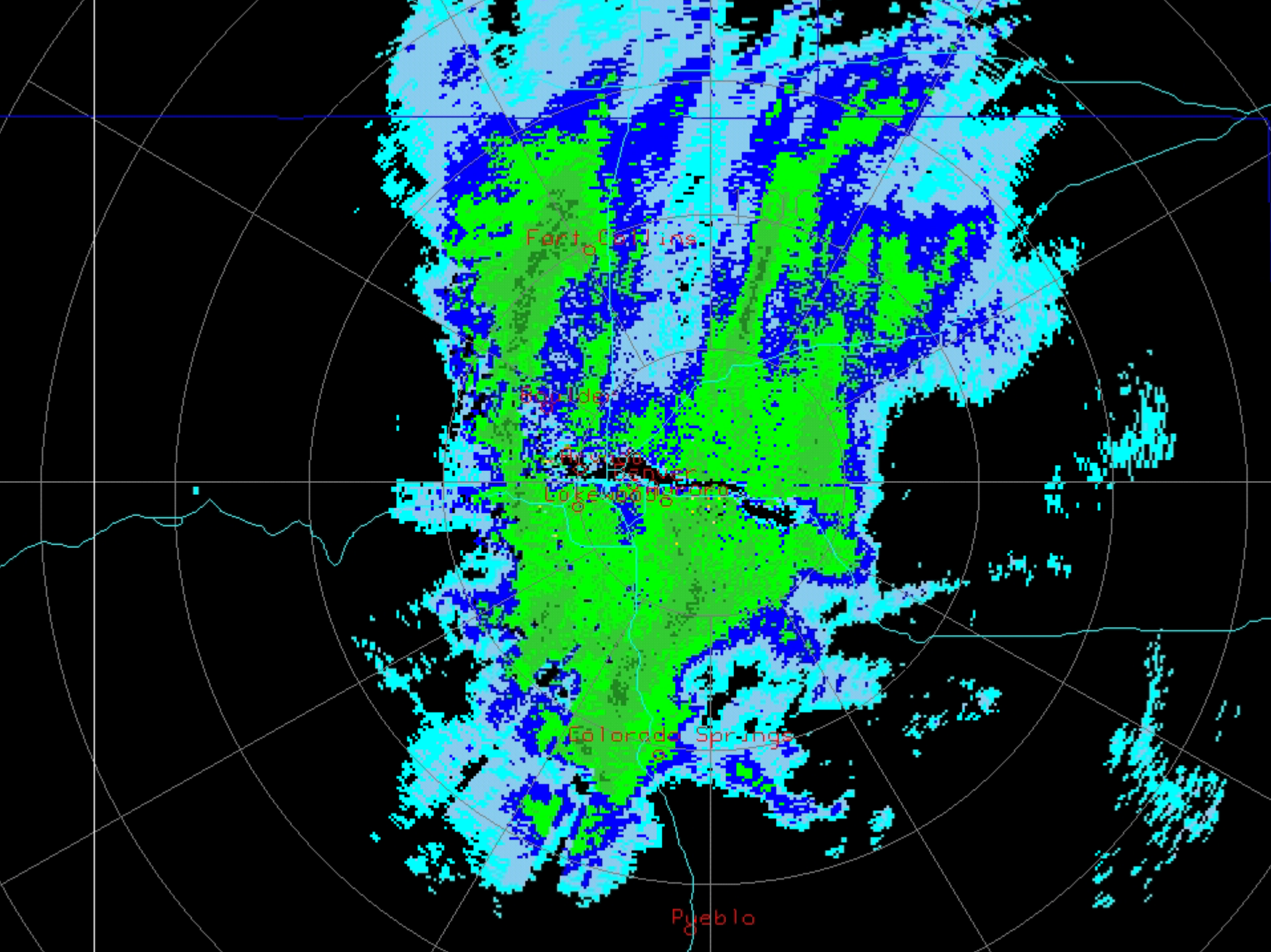


SLAT	39.75
SLON	-104.
SELV	1625.
SHOW	-9999
LIFT	9.05
LFTV	9.15
SWET	-9999
KINX	-9999
CTOT	-9999
VTOT	-9999
TOTL	-9999
CAPE	0.00
CAPV	0.00
CINS	0.00
CINV	0.00
EQLV	-9999
EQTV	-9999
LFCT	-9999
LFCV	-9999
BRCH	0.00
BRCV	0.00
LCLT	270.6
LCLP	806.4
MLTH	287.8
MLMR	3.99
THCK	5417.
PWAT	11.18

00Z 29 Dec 2006

University of Wyoming





Fort Collins

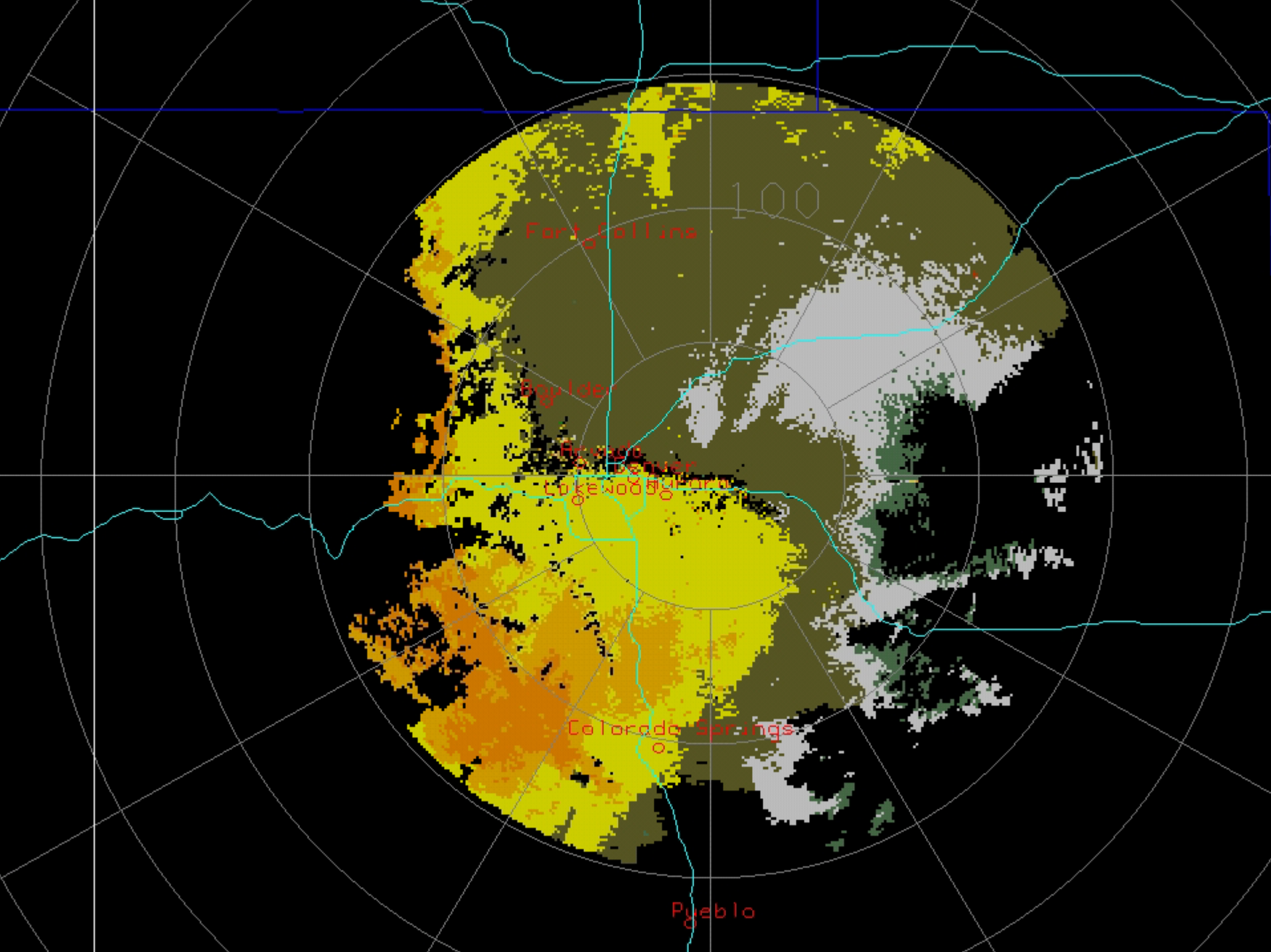
Boulder

Denver

Loveland

Colorado Springs

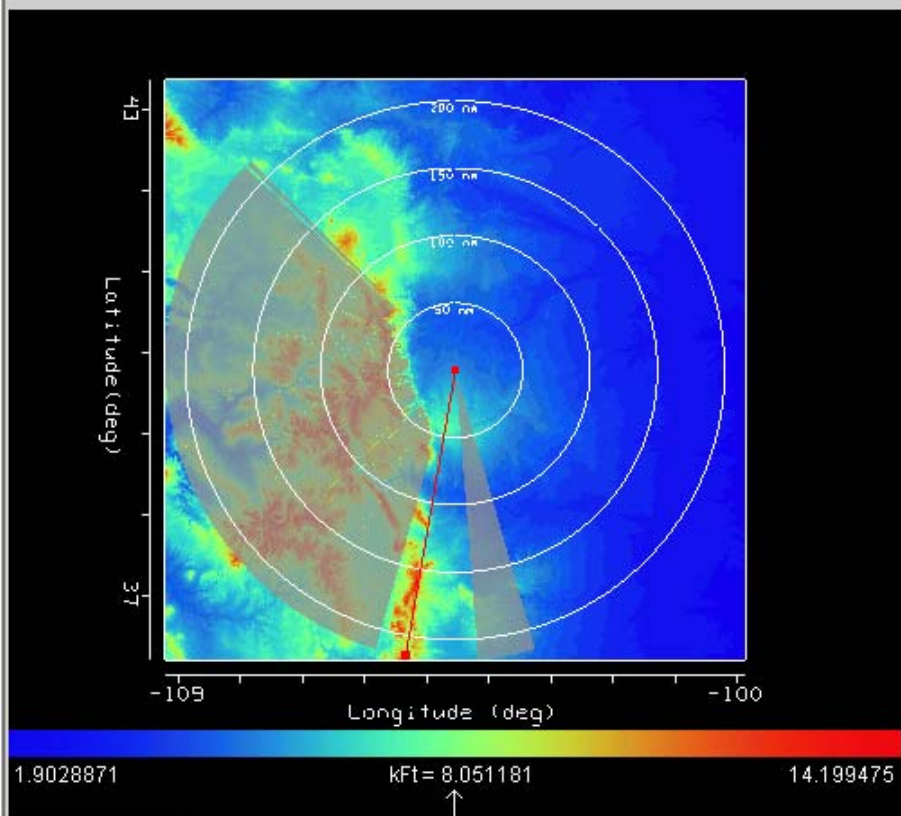
Pueblo



Current Radar Info

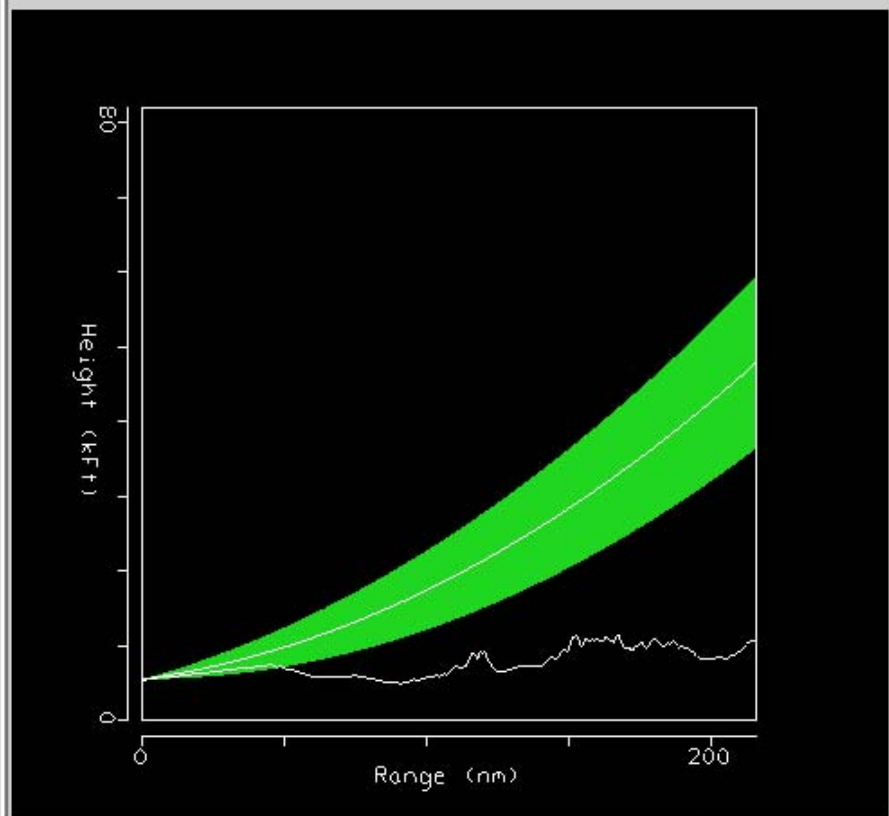
ICAO: **KFTG** , Site Name: **"DENVER"** , Location: **FRONT RANGE AP, CO** , Latitude: **39.787** , Longitude: **-104.546** , Feedhorn Elevation (m): **1705.0**

PPI Panel



Reset Rings

VCP RayPath



Reset GC Beams Label BW BF HF HL Sdg DBz

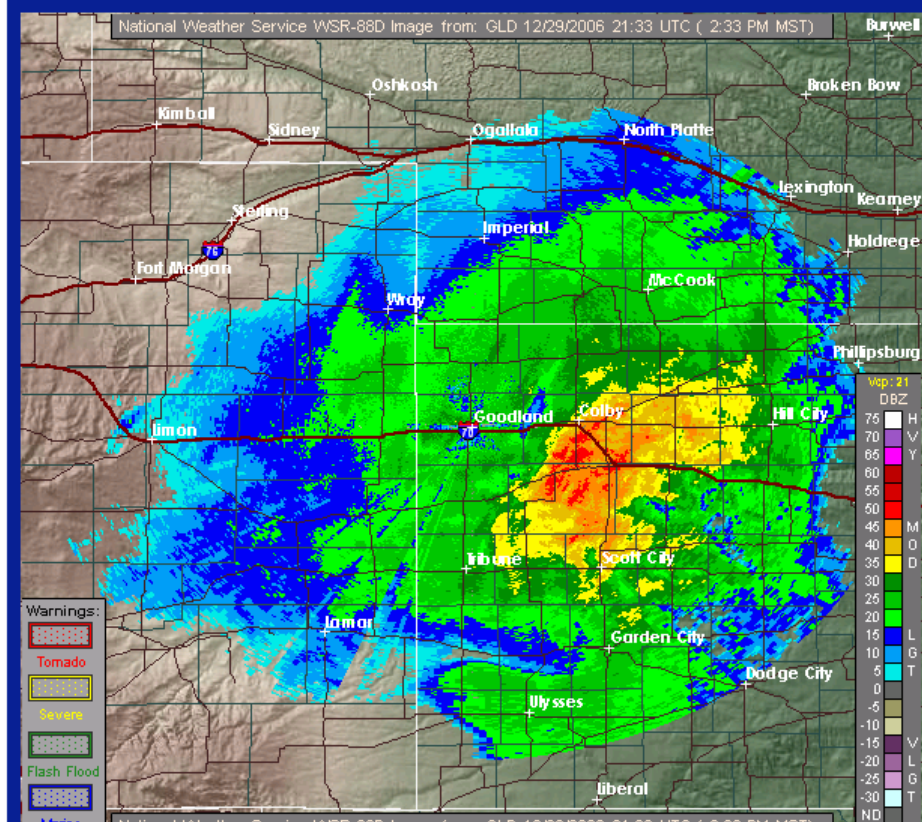
VCP Controls

VCP21	04.30	↑	Elev.	00.50	Azimuth	189.87	Beam Blockage (%)	020
VCP21	03.35	↓						
VCP21	02.40							
VCP21	01.45							
VCP21	00.50	↓						

Base Reflectivity

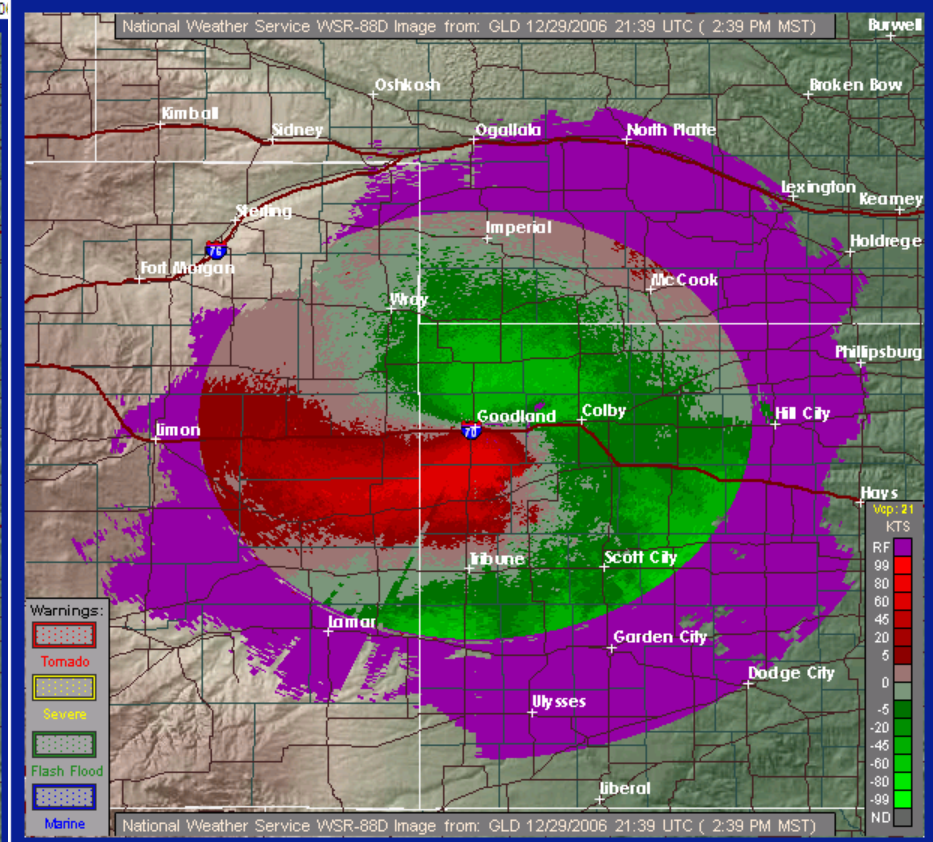
NWS Goodland, KS

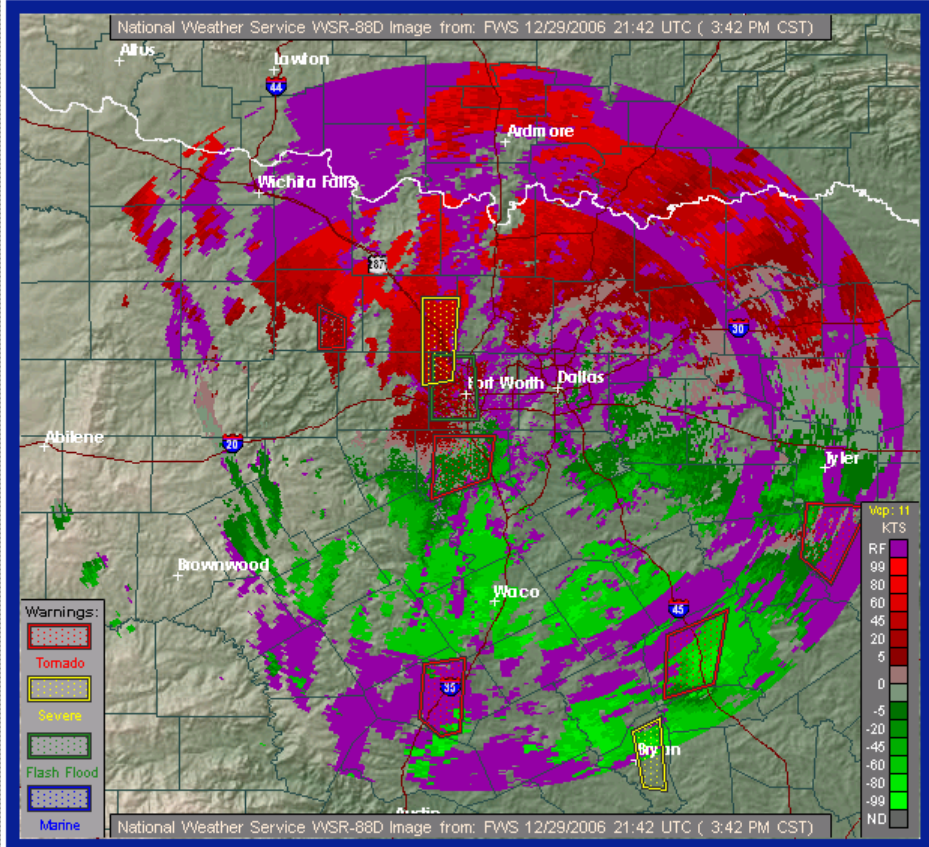
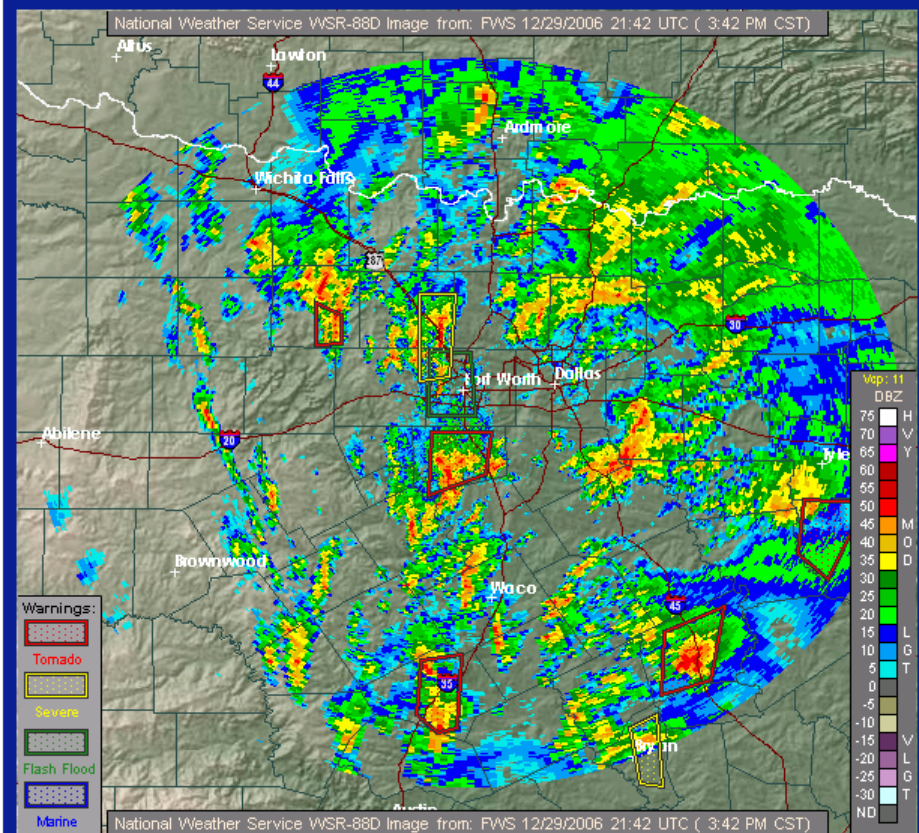
02:39 PM MST Fri Dec 29 2006

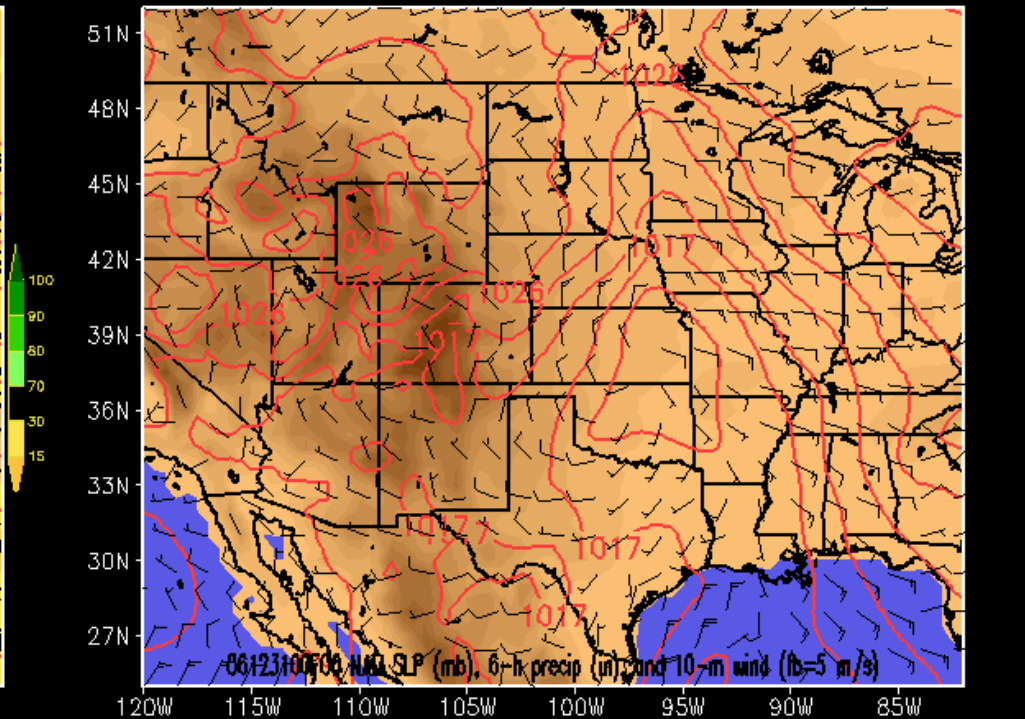
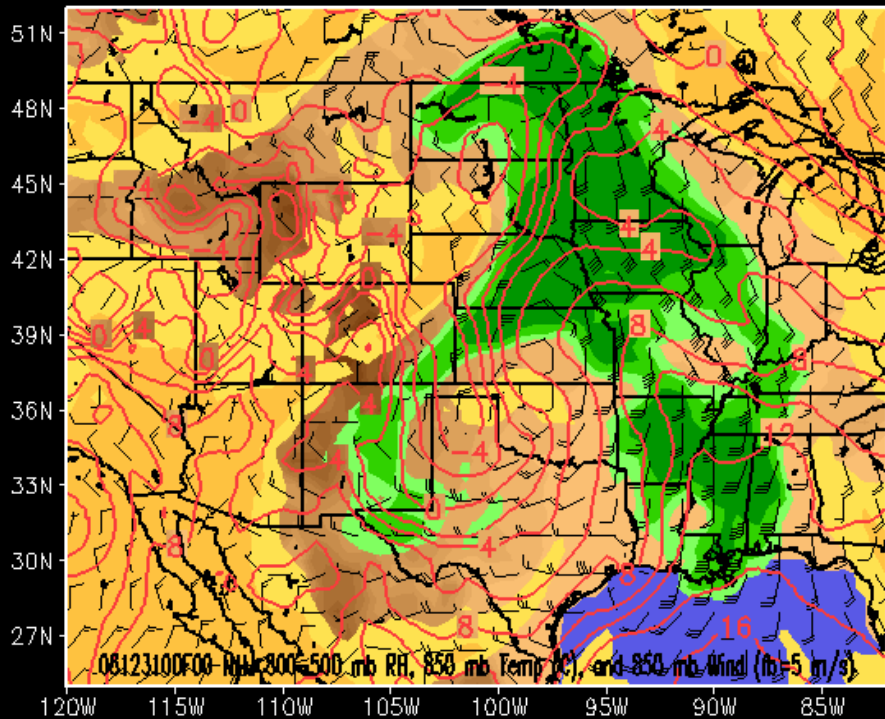
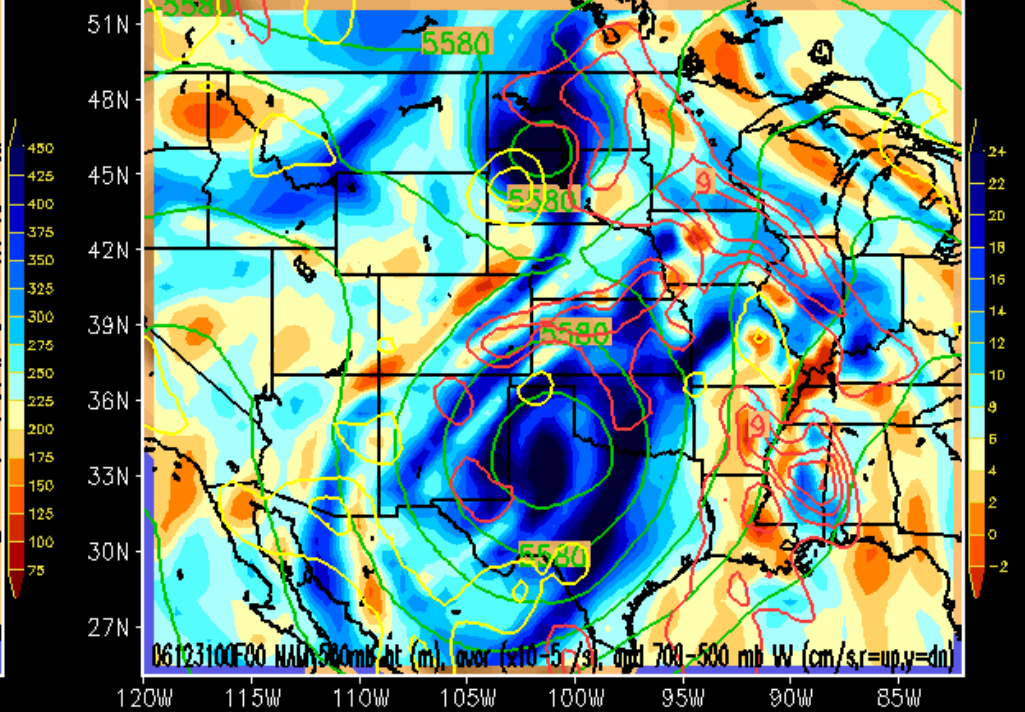
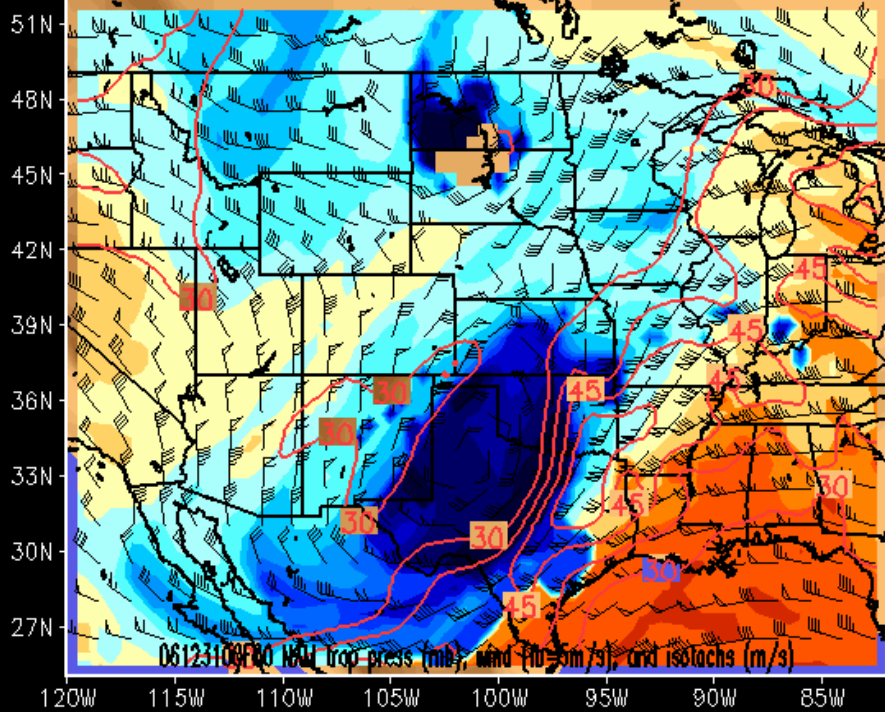


NWS Goodland, KS

02:39 PM MST Fri Dec 29 2006









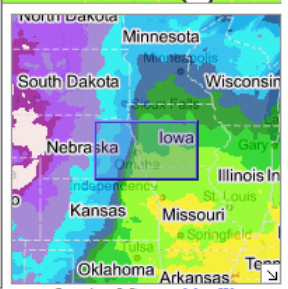
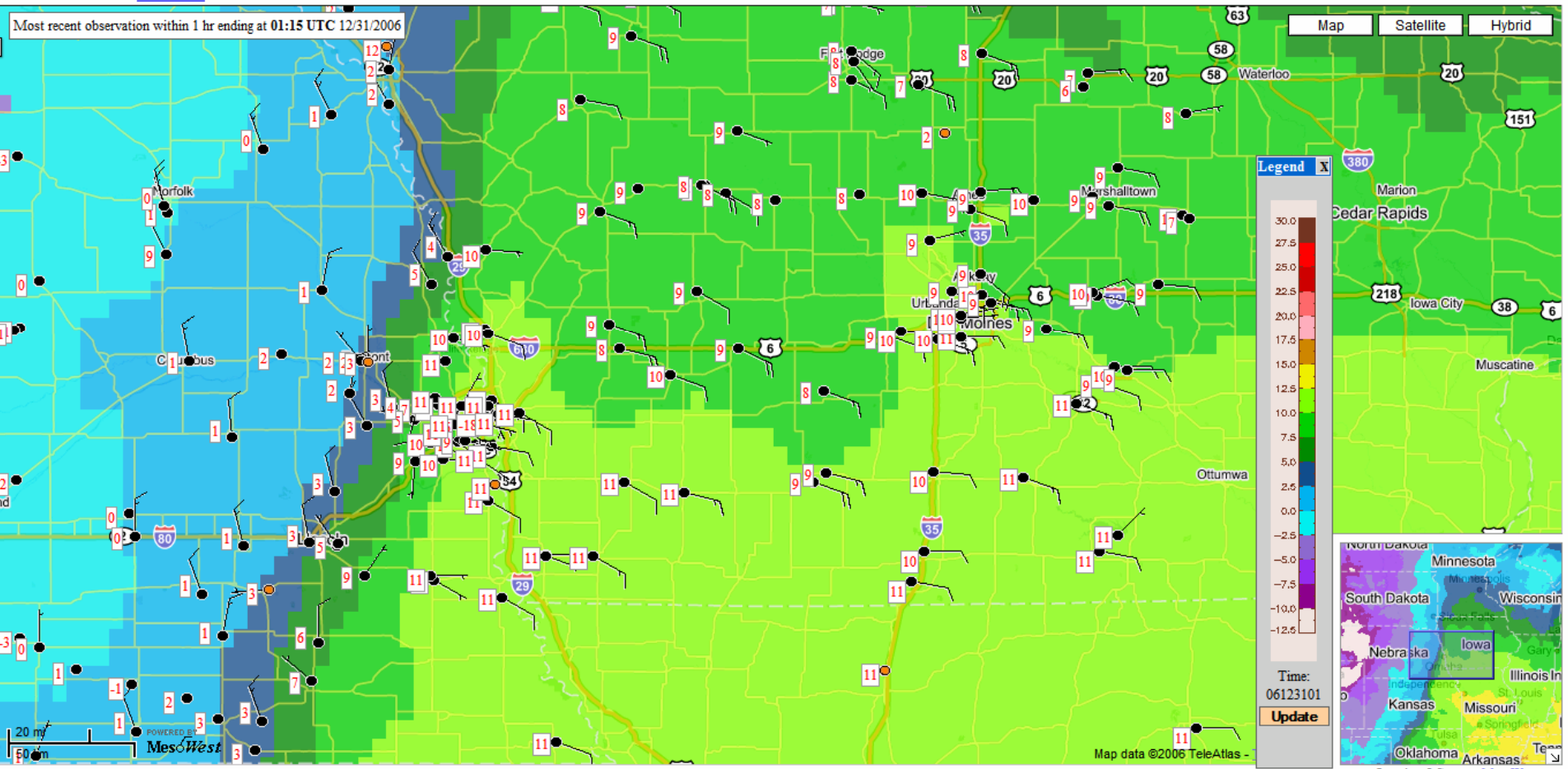
Show Menu

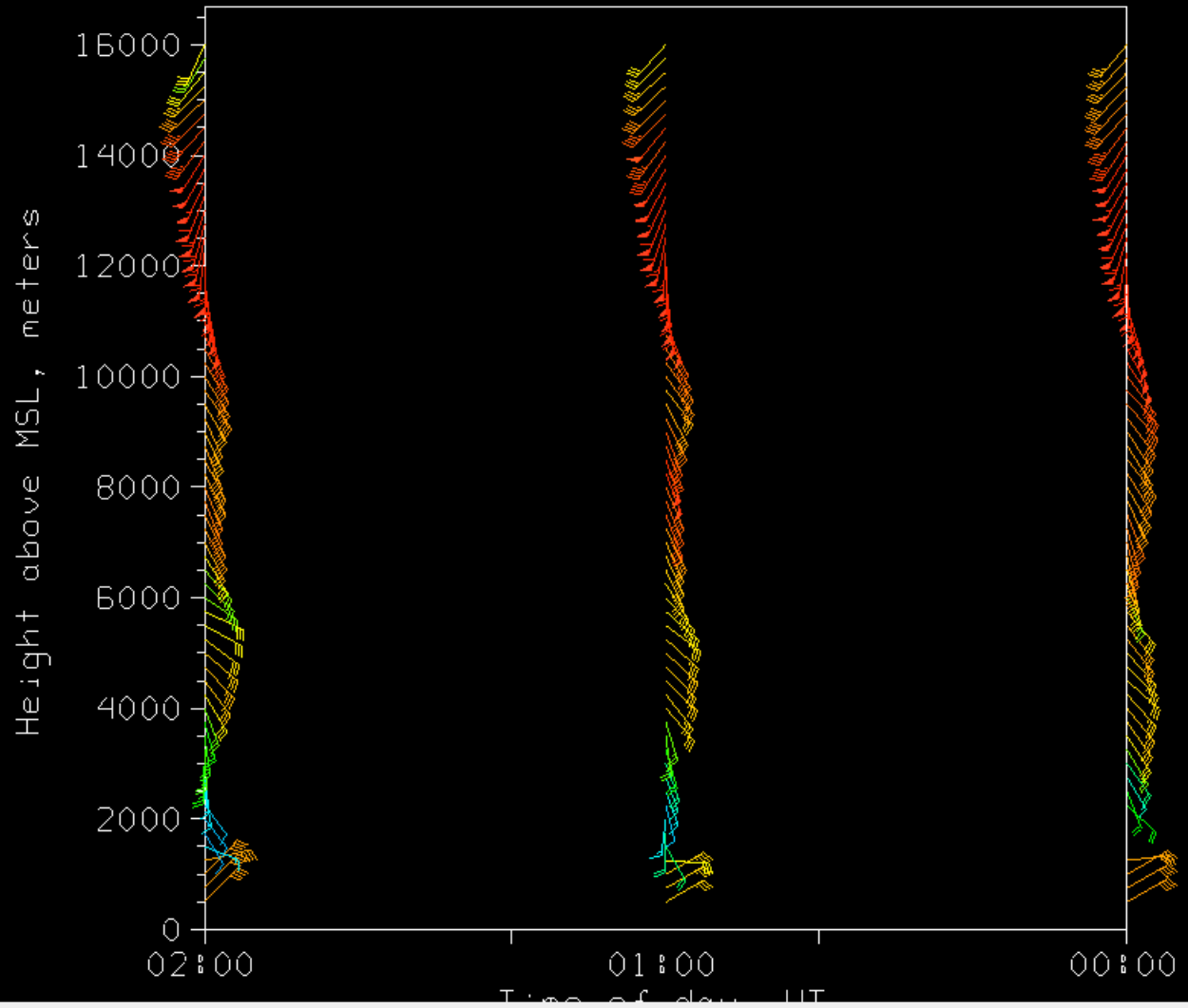
Search Location: Go!

Map Product: Default Change

Show Tables

Most recent observation within 1 hr ending at 01:15 UTC 12/31/2006

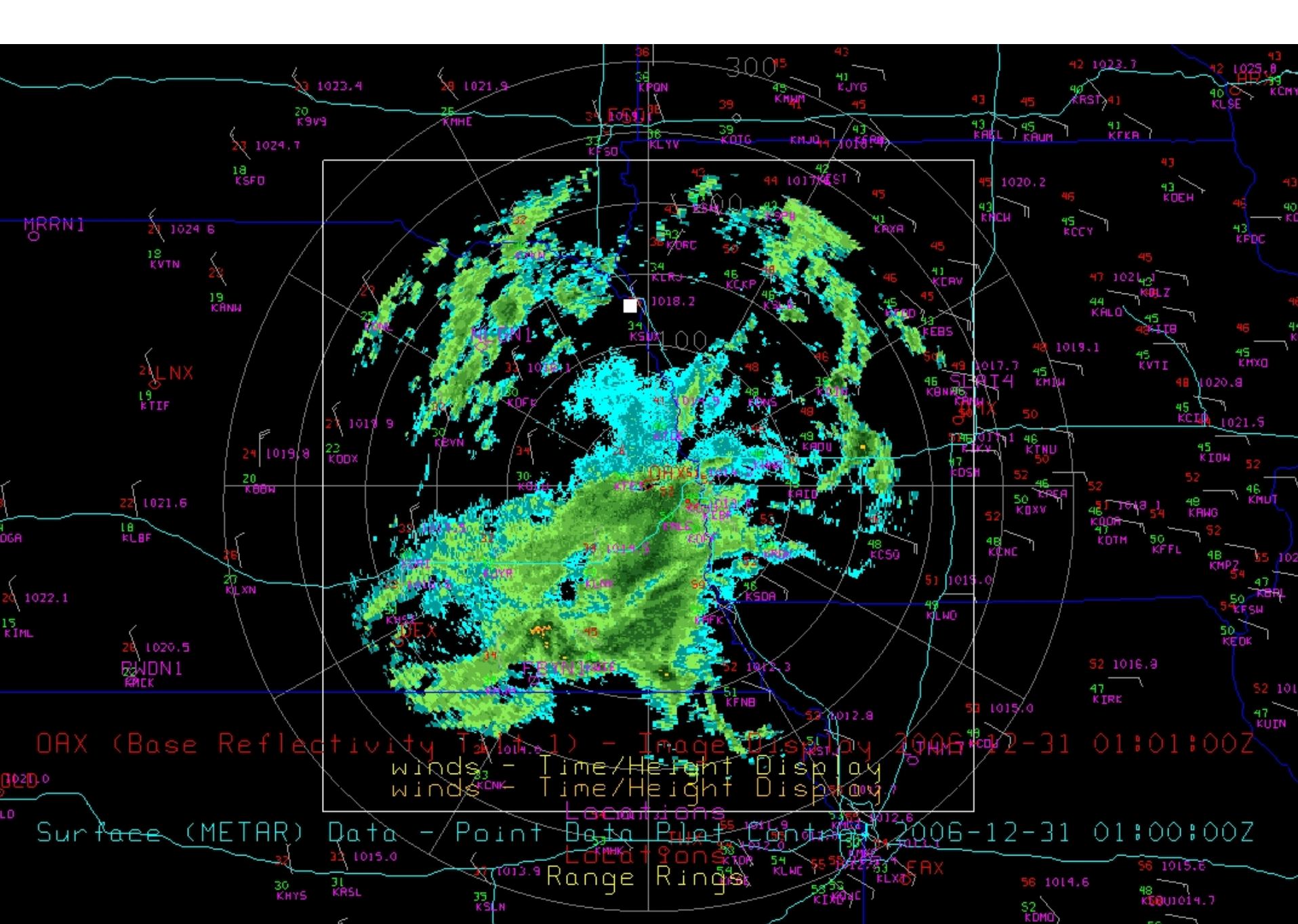




Color Table: Windspeed 0 50

Windbarb size: 3 Vertical interval (m): 250

Latest data on left:



DAX (Base Reflectivity 1) - Image Display 2006-12-31 01:01:00Z

winds - Time/Height Display
winds - Time/Height Display

Surface (METAR) Data - Point Data Plot Center 2006-12-31 01:00:00Z


Locations

Locations

Range Rings

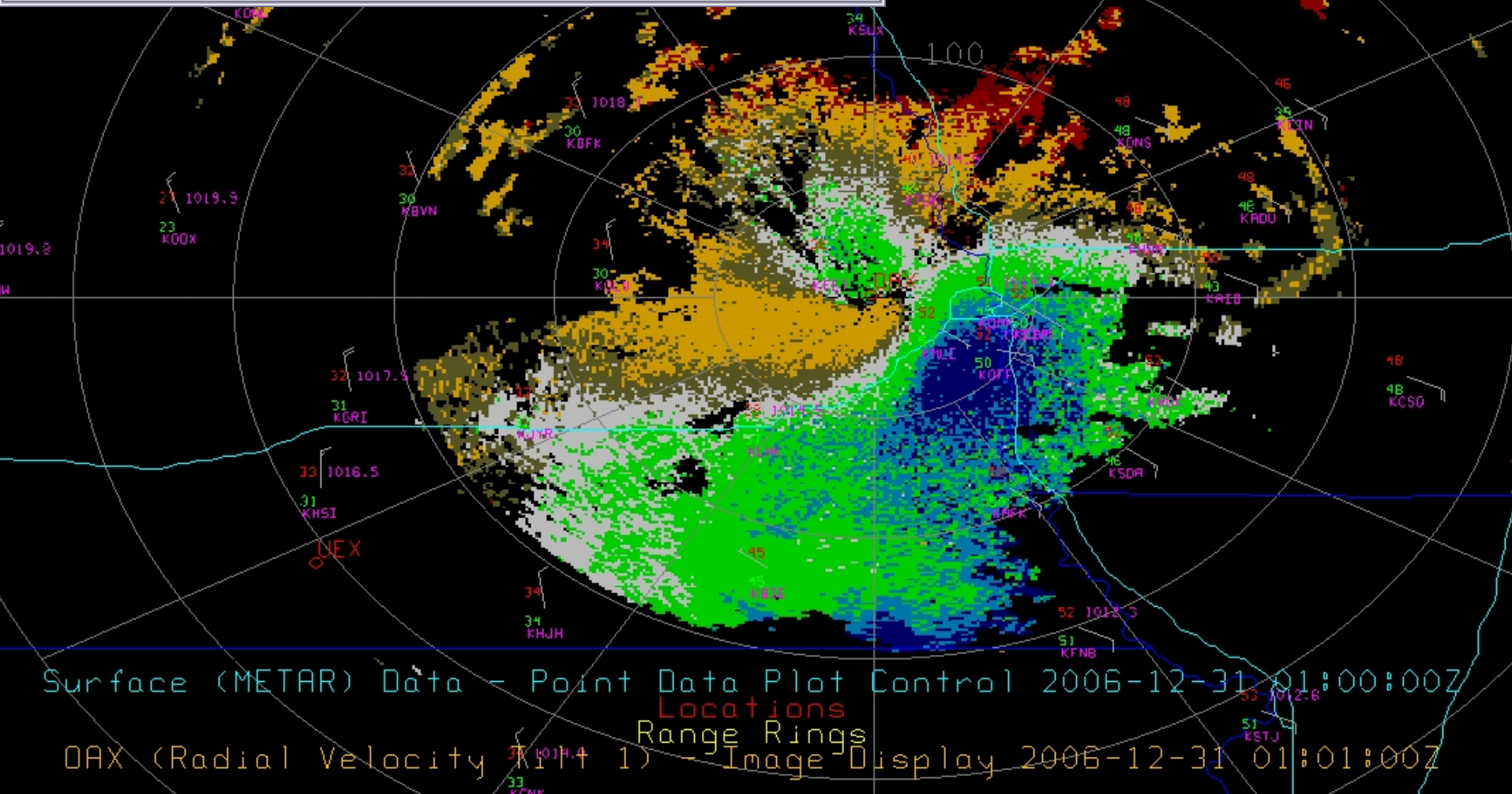
DAX

File Edit View Help

Color Table: **Radial Velocity** -30  30 kt

Vertical Position: Bottom Middle Top

Pixel Sampling: 0 5 10



Surface (METAR) Data - Point Data Plot Control 2006-12-31 01:00:00Z

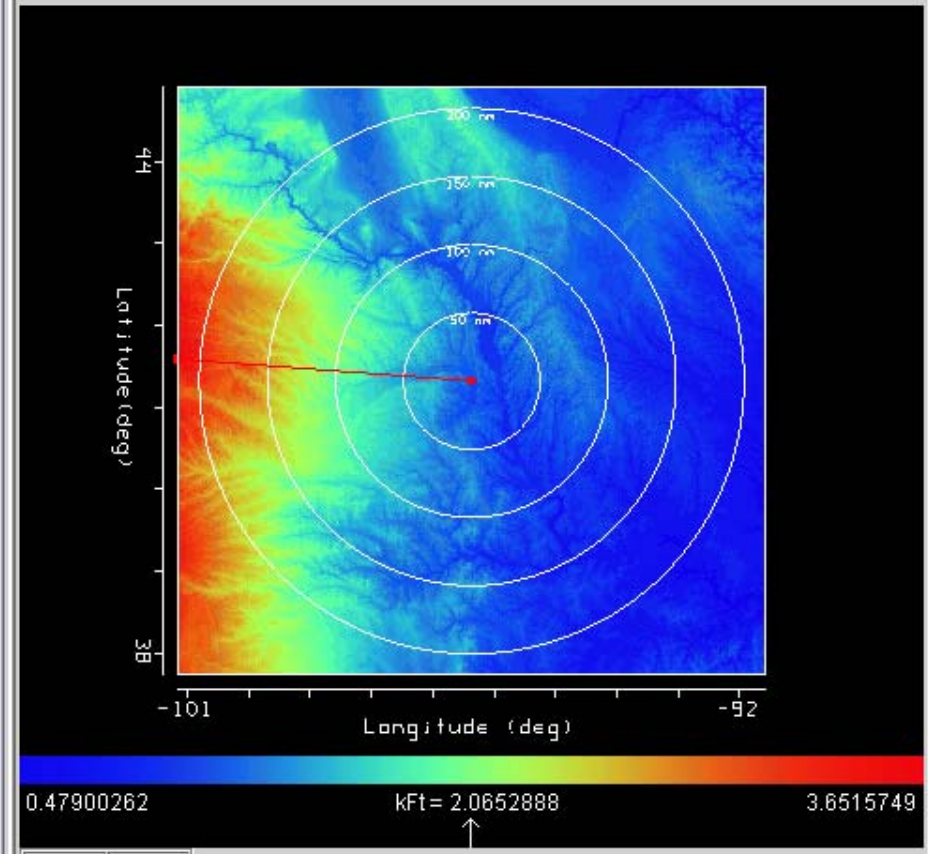
Locations
Range Rings

OAX (Radial Velocity Tilt 1) - Image Display 2006-12-31 01:01:00Z

Current Radar Info

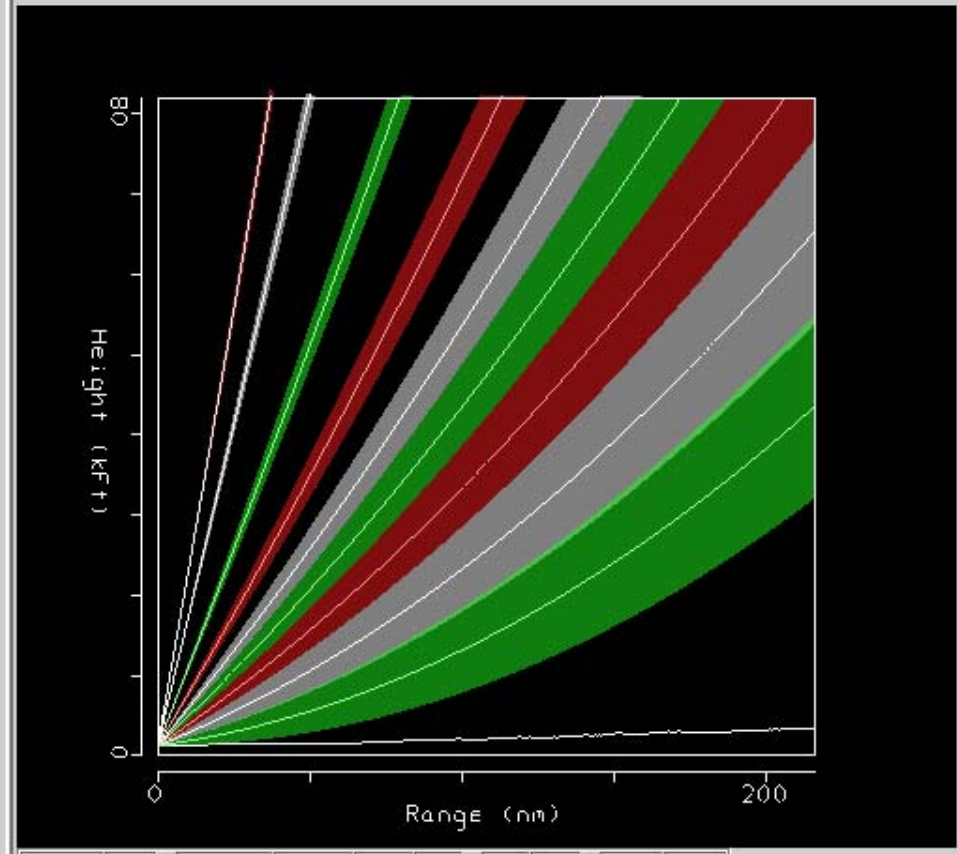
ICAO: **KOAX** , Site Name: **"OMAHA"** , Location: **VALLEY, NE** , Latitude: **41.320** , Longitude: **-96.367** , Feedhorn Elevation (m): **380.0**

PPI Panel



Reset Rings

VCP RayPath



Reset GC Beams Label BW BF HF HL Sdg DBz

VCP Controls

VCP21	04.30	▲	Elev.	Azimuth	Beam Blockage (%)
	03.35	▲			
VCP21	02.40	▼			
	01.45	▼			
00.50	00.50	▼			
			00.50	274.30	50

OAX (Radial Velocity Tilt 2) - Image Display

File Edit View Help

Color Table: Radial Velocity -30 30 kt

Vertical Position: Bottom Middle Top

Pixel Sampling: 0 5 10

