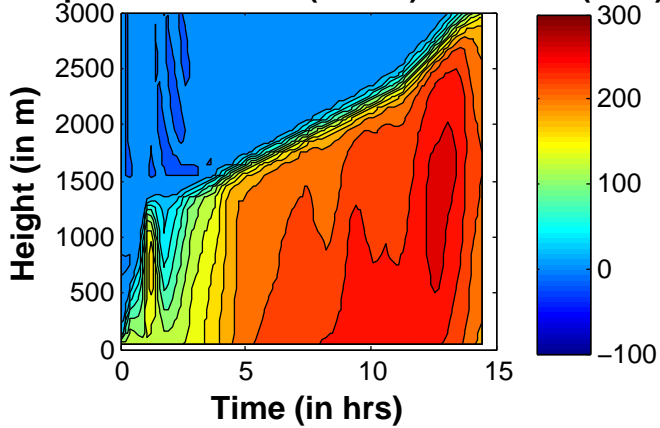
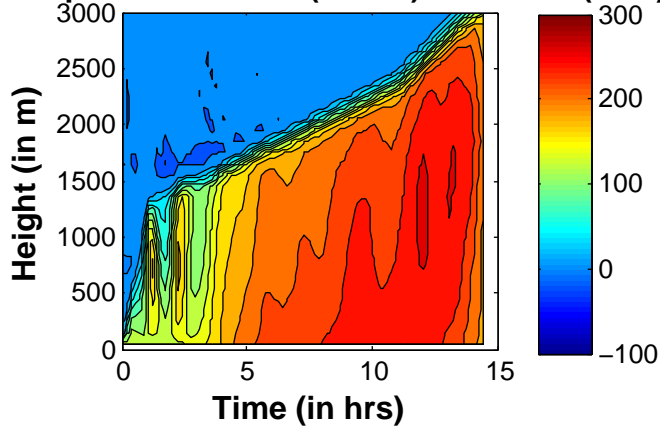


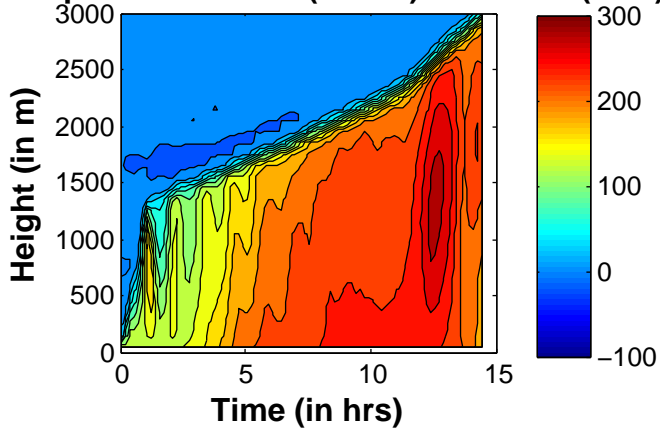
Non-prec. water flux ($W m^{-2}$) Run 604c (8km)



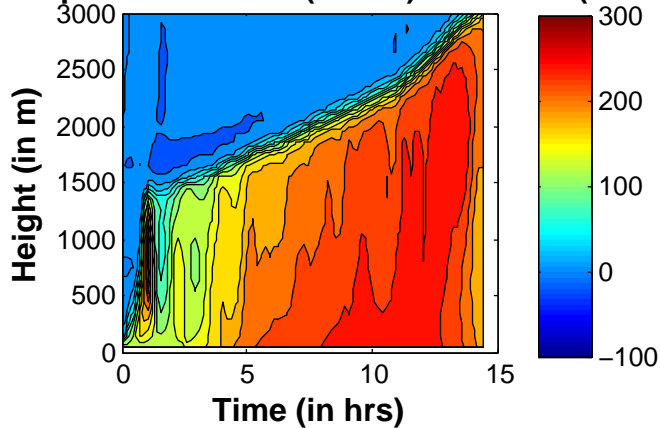
Non-prec. water flux ($W m^{-2}$) Run 601c (3km)



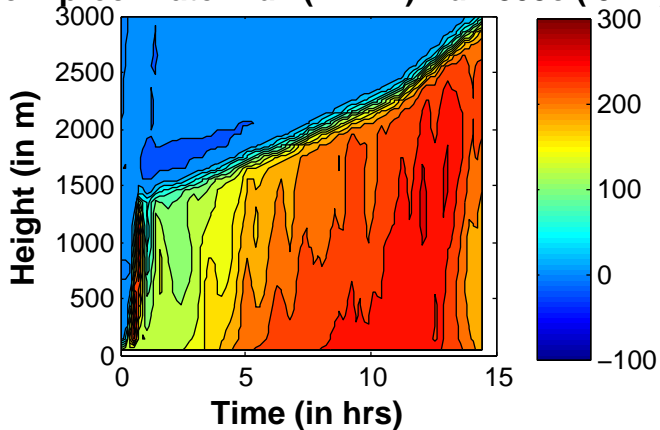
Non-prec. water flux ($W m^{-2}$) Run 602c (1km)



Non-prec. water flux ($W m^{-2}$) Run 603c (.5km)



Non-prec. water flux ($W m^{-2}$) Run 803c (.5km)



Non-prec. water flux ($W m^{-2}$) Run 805c (.1km)

